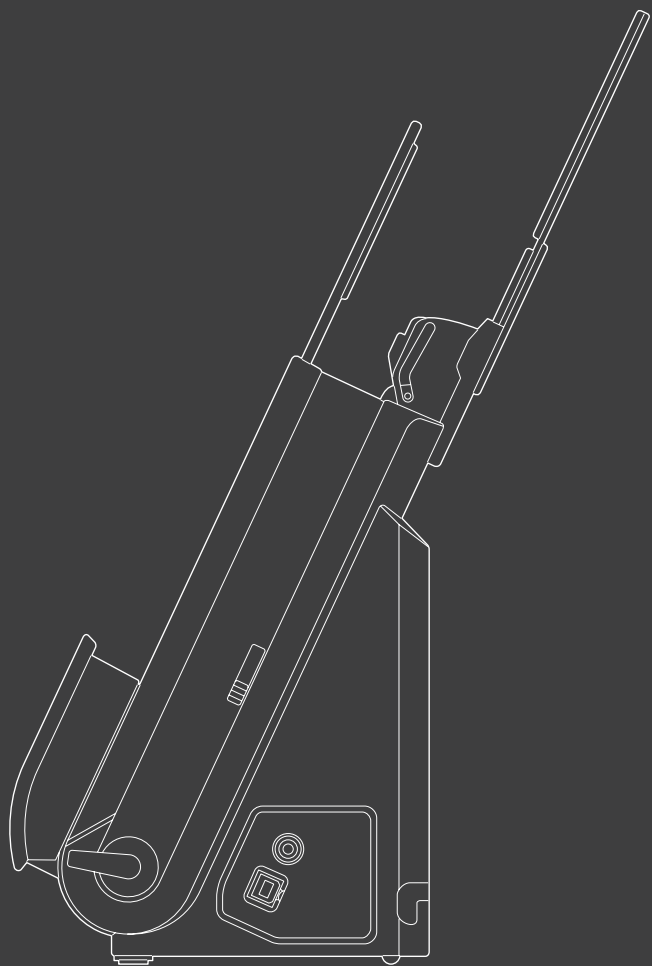
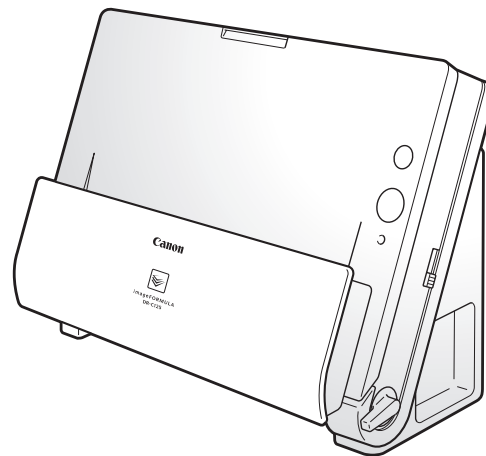


Canon



 **imageFORMULA**
DR-C125

Reference Guide



- Please read this manual before operating this scanner.
- After you finish reading this manual, store it in a safe place for future reference.

READ CAREFULLY BEFORE OPENING THE SEALED DISK PACKAGE

CANON SOFTWARE LICENSE AGREEMENT

IMPORTANT-READ THIS AGREEMENT BEFORE OPENING THE SEALED DISK PACKAGE! BY OPENING THE SEALED DISK PACKAGE, YOU ARE DEEMED TO AGREE TO BE BOUND BY THIS AGREEMENT.

This legal document is a license agreement between you and CANON ELECTRONICS INC. ("Canon"). BY OPENING THE SEALED DISK PACKAGE, YOU ARE DEEMED TO AGREE TO BE BOUND BY THE TERMS OF THIS AGREEMENT. IF YOU DO NOT AGREE TO THE TERMS OF THIS AGREEMENT, DO NOT OPEN THE SEALED DISK PACKAGE AND PROMPTLY RETURN THE CANON SCANNER, THE DISK PACKAGE CONTAINING SCANNER DRIVER SOFTWARE PROGRAMS AND/OR SCANNER UTILITY SOFTWARE PROGRAM PROPRIETARY TO CANON OR ITS LICENSOR (THE "SOFTWARE") AND THE ACCOMPANYING DOCUMENTATION AND OTHER ITEMS TO THE PLACE WHERE YOU OBTAINED THEM FOR A REFUND BEFORE THEY ARE USED OR OPENED OR UNPACKED.

In consideration of the right to use the SOFTWARE, you agree to abide by the terms and conditions of this Agreement.

1. GRANT OF LICENSE: Canon grants you the personal, non-exclusive right to use the SOFTWARE only on a single computer. You shall need to obtain multiple licenses separately from Canon when you shall install the SOFTWARE on multiple computers.

You shall not assign, sublicense, sell, rent, lease, loan, convey or transfer to any third party, or send or bring the SOFTWARE out of the country where you originally obtain it to other countries without required authorization of applicable governments, or copy, duplicate, translate or convert to another programming language the SOFTWARE or accompanying documentation, except as expressly provided herein.

Except as expressly permitted under the applicable law, you shall not alter, modify, disassemble, decompile or otherwise reverse engineer the SOFTWARE or accompanying documentation and you also shall not have any third party do so.

2. BACK-UP COPY: You may make one copy of the SOFTWARE solely for a back-up purpose or copy the SOFTWARE onto the permanent storage device (e.g. a hard disk) of your computer and retain the original for a back-up purpose. Except as expressly permitted under the applicable law, any other copying of the SOFTWARE is a violation of this Agreement. You must reproduce and include the copyright notice on the back-up copy.

3. SUPPORT AND UPDATE: Canon, Canon's affiliate, their distributor or dealer is not responsible for maintaining or helping you to use the SOFTWARE. No updates, fixes or support will be made available for the SOFTWARE.

4. LIMITED WARRANTY AND DISCLAIMER OF INDEMNITY:

Canon, Canon's affiliate, their distributor or dealer will not guarantee uninterrupted service, or absence or correction of errors. Therefore, the SOFTWARE is licensed on an "AS IS" basis without warranty of any kind. The diskette on which the SOFTWARE is recorded is warranted against defective material or workmanship under normal use for a period of ninety (90) days from the date you purchased the same as evidenced by a receipt or otherwise. The limited warranty does not apply if the failure of the diskette resulted from accident, abuse or misapplication of the SOFTWARE and shall not extend to anyone other than the original user of the SOFTWARE.

CANON, CANON'S AFFILIATE, THEIR DISTRIBUTOR OR DEALER DISCLAIMS ALL IMPLIED WARRANTIES, INCLUDING ANY WARRANTY OF MERCHANTABILITY OR FITNESS FOR A PARTICULAR PURPOSE, WITH RESPECT TO THE SOFTWARE OR ACCOMPANYING DOCUMENTATION.

NEITHER CANON, CANON'S AFFILIATE, THEIR DISTRIBUTOR NOR DEALER IS LIABLE FOR ANY LOSS OR DAMAGE INCLUDING CONSEQUENTIAL OR INCIDENTAL LOSS OR DAMAGE SUCH AS LOSS OF PROFITS, EXPENSE OR INCONVENIENCE, WHATSOEVER CAUSED BY OR ARISING OUT OF THE SOFTWARE, ACCOMPANYING DOCUMENTATION OR THE USE THEREOF.

CANON, CANON'S AFFILIATE, THEIR DISTRIBUTOR OR DEALER SHALL HAVE NO OBLIGATION TO INDEMNIFY YOU AGAINST ANY CLAIM OR SUIT BROUGHT BY A THIRD PARTY ALLEGING THAT THE SOFTWARE, ACCOMPANYING DOCUMENTATION OR THE USE THEREOF INFRINGES ANY INTELLECTUAL PROPERTY OF SUCH THIRD PARTY.

THE ABOVE IS CANON'S ENTIRE LIABILITY AND YOUR EXCLUSIVE REMEDY IN CONNECTION WITH THE SOFTWARE AND ACCOMPANYING DOCUMENTATION.

5. TERM: This Agreement is effective upon opening the sealed disk package and remains in effect until terminated. You may terminate this Agreement by destroying the SOFTWARE and any copy thereof. This Agreement will also terminate if you fail to comply with any of the terms of this Agreement. In addition to Canon enforcing its respective legal rights, you must then promptly destroy the SOFTWARE and any copy thereof.

6. U.S. GOVERNMENT RESTRICTED RIGHTS NOTICE: The SOFTWARE is provided with RESTRICTED RIGHTS. Use, duplication or disclosure is subject to restrictions as set forth in either subparagraph (c) (1) (ii) of the Rights in Technical Data and Computer Software clause at DFARs 252.227-7013 or subparagraph (c) (1) and (2) of the Commercial Computer Software Restricted Rights Clause at FAR 52.227-19, as applicable.

7. SEVERABILITY: In the event that provision of this Agreement is declared or found to be illegal by any court or tribunal of competent jurisdiction, such provision shall be null and void with respect to the jurisdiction of that court or tribunal and all the remaining provisions of this Agreement shall remain in full force and effect.

8. ACKNOWLEDGEMENT: BY OPENING THE SEALED DISK PACKAGE, YOU ACKNOWLEDGE THAT YOU HAVE READ THIS AGREEMENT, UNDERSTOOD IT, AND AGREE TO BE BOUND BY ITS TERMS AND CONDITIONS. YOU ALSO AGREE THAT THIS AGREEMENT IS THE COMPLETE AND EXCLUSIVE STATEMENT OF AGREEMENT BETWEEN YOU AND CANON CONCERNING THE SUBJECT MATTER HEREOF AND SUPERSEDES ALL PROPOSALS OR PRIOR AGREEMENTS, VERBAL OR WRITTEN, AND ANY OTHER COMMUNICATIONS BETWEEN YOU AND CANON RELATING TO THE SUBJECT MATTER HEREOF. NO AMENDMENT TO THIS AGREEMENT SHALL BE EFFECTIVE UNLESS SIGNED BY A DULY AUTHORIZED REPRESENTATIVE OF CANON.

Should you have any questions concerning this Agreement, or if you desire to contact Canon for any reason, please write to Canon's local affiliate.

FCC REGULATIONS (For 120 V model)

Document Scanner, Model M111081

This device complies with Part 15 of the FCC Rules. Operation is subject to the following two conditions: (1) This device may not cause harmful interference, and (2) this device must accept any interference received, including interference that may cause undesired operation.

Note: This equipment has been tested and found to comply with the limits for a Class B digital device, pursuant to Part 15 of the FCC Rules. These limits are designed to provide reasonable protection against harmful interference in a residential installation. This equipment generates, uses, and can radiate radio frequency energy and, if not installed and used in accordance with the instructions, may cause harmful interference to radio communications. However, there is no guarantee that interference will not occur in a particular installation. If this equipment does cause harmful interference to radio or television reception, which can be determined by turning the equipment OFF and ON, the user is encouraged to try to correct the interference by one or more of the following measures:

- Reorient or relocate the receiving antenna.
 - Increase the separation between the equipment and receiver.
 - Connect the equipment into an outlet on a circuit different from that to which the receiver is connected.
 - Consult the dealer or an experienced radio/TV technician for help.
- Use of shielded cable is required to comply with Class B limits in Subpart B of Part 15 of FCC Rules.

Do not make any changes or modifications to the equipment unless otherwise specified in the manual. If such changes or modifications should be made, you could be required to stop operation of the equipment.

Canon U.S.A. Inc.

One Canon Plaza, Lake Success NY 11042, U.S.A.

Tel. No. (516)328-5000

RADIO INTERFERENCE REGULATIONS (For 120 V models)

This digital apparatus does not exceed the Class B limits for radio noise emissions from digital apparatus as set out in the interference-causing equipment standard entitled "Digital Apparatus", ICES-003 of the Industry Canada.

RÈGLEMENT SUR LE BROUILLAGE RADIOÉLECTRIQUE (For 120 V models)

Cet appareil numérique respecte les limites de bruits radioélectriques applicables aux appareils numériques de Classe B prescrites dans la norme sur le matériel brouilleur: "Appareils Numériques", NMB-003 édictée par l'Industrie Canada.

International ENERGY STAR® Office Equipment Program



As an ENERGY STAR® Partner, CANON ELECTRONICS INC. has determined that this machine meets the ENERGY STAR® Program guidelines for energy efficiency.

The International ENERGY STAR® Office Equipment Program is an international program that promotes energy saving through the use of computers and other office equipment. The program backs the development and dissemination of products with functions that effectively reduce energy consumption. It is an open system in which business proprietors can participate voluntarily. The targeted products are office equipment, such as computers, monitors, printers, fax, machine, copiers, and scanners. The standards and logos are uniform among participating nations.

European Union (and EEA) only.



This symbol indicates that this product is not to be disposed of with your household waste, according to the WEEE Directive (2002/96/EC) and your national law. This product should be handed over to a designated collection point, e.g., on an authorized one-for-one basis when you buy a new similar product or to an authorized collection site for recycling waste electrical and electronic equipment (EEE). Improper handling of this type of waste could have a possible negative impact on the environment and human health due to potentially hazardous substances that are generally associated with EEE. At the same time, your cooperation in the correct disposal of this product will contribute to the effective usage of natural resources. For more information about where you can drop off your waste equipment for recycling, please contact your local city office, waste authority, approved WEEE scheme or your household waste disposal service. For more information regarding return and recycling of WEEE products, please visit www.canon-europe.com/environment. (EEA: Norway, Iceland and Liechtenstein)

Für EMVG

Dieses Produkt ist zum Gebrauch im Wohnbereich, Geschäfts-und Gewerbebereich sowie in Kleinbetrieben vorgesehen.

Model Names

The following names may be provided for the safety regulations in each sales region of the Document Scanner.

DR-C125: Model M111081

Trademarks

- Canon and the Canon logo are registered trademarks, of Canon Inc. in the United States and may also be trademarks or registered trademarks in other countries.
- imageFORMULA is a trademark of CANON ELECTRONICS INC.
- Microsoft, Windows, Windows Vista, PowerPoint, and SharePoint are registered trademarks or trademarks of Microsoft Corporation in the United States and other countries.
- Microsoft product screen shot(s) reprinted with permission from Microsoft Corporation.
- Macintosh and Mac OS are registered trademarks of Apple Inc. in the United States and other countries.
- ENERGY STAR® is a registered trademark of the United States Environmental Protection Agency.
- ISIS is a registered trademark of Emc Corporation in the United States.
- Copyright © 1995-2011 Nuance Communications, Inc. All rights reserved. Nuance, eCopy, and OmniPage are trademarks and/or registered trademarks of Nuance Communications, Inc. and/or its affiliates in the United States and/or other countries.
- Other product and company names herein may be the trademarks of their respective owners. However, the TM and [®] symbols are not used in this document.

Copyright

Copyright 2011 by CANON ELECTRONICS INC. All rights reserved. No part of this publication may be reproduced or transmitted in any form or by any means, electronic or mechanical, including photocopying and recording, or by any information storage or retrieval system without the prior written permission of CANON ELECTRONICS INC.

Disclaimers

The information in this document is subject to change without notice.

CANON ELECTRONICS INC. MAKES NO WARRANTY OF ANY KIND WITH REGARD TO THIS MATERIAL, EITHER EXPRESS OR IMPLIED, EXCEPT AS PROVIDED HEREIN, INCLUDING WITHOUT LIMITATION, THEREOF, WARRANTIES AS TO MARKETABILITY, MERCHANTABILITY, FITNESS FOR A PARTICULAR PURPOSE OF USE OR NON-INFRINGEMENT. CANON ELECTRONICS INC. SHALL NOT BE LIABLE FOR ANY DIRECT, INCIDENTAL, OR CONSEQUENTIAL DAMAGES OF ANY NATURE, OR LOSSES OR EXPENSES RESULTING FROM THE USE OF THIS MATERIAL.

CANON ELECTRONICS INC. IS NOT LIABLE FOR THE STORAGE AND HANDLING OF DOCUMENTS SCANNED WITH THIS PRODUCT, OR THE STORAGE AND HANDLING OF RESULTING SCANNED IMAGE DATA.

IF YOU INTEND TO DISCARD THE ORIGINALS OF SCANNED DOCUMENTS, YOU THE CUSTOMER ARE RESPONSIBLE FOR INSPECTING THE SCANNED IMAGES AND VERIFYING THAT DATA IS INTACT.

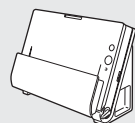
THE MAXIMUM LIABILITY OF CANON ELECTRONICS INC. UNDER THIS WARRANTY IS LIMITED TO THE PURCHASE PRICE OF THE PRODUCT COVERED BY THE WARRANTY.

Setup Guide

Please read first.

STEP 1 Checking the Accessories

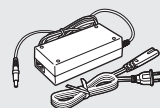
If any of the items listed below are missing or damaged, contact your local authorized Canon dealer or service representative.



Scanner



USB Cable
Type A/Type B (Length: 1.8 m)



AC Adapter/Power Cord
(Connected length: 2.6 m)



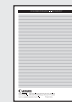
Setup Disc



Reference Guide



Before Use



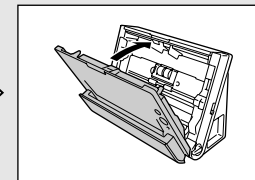
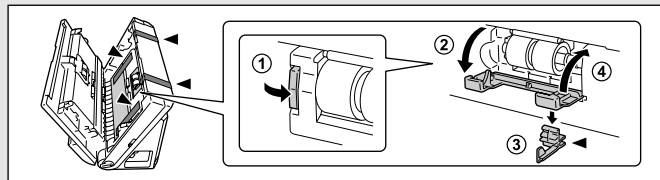
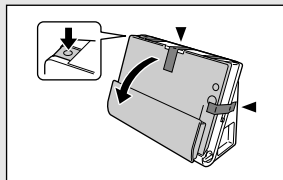
Warranty Card
(U.S.A. and Canada only)



Registration Card
(U.S.A. and Canada only)

- Items included in this manual are subject to change without notice.
- You must keep the machine's packaging and packing materials for storing or transporting the machine.
- A print version of *Reference Guide* is supplied in English.
The content of the *Reference Guide* can be found in other languages in the *User Manual* on the Setup Disc.
- The shape of the power plug varies by country and region.

Remove the scanner from the box, and remove the orange tape and protective sheets (▼) from the scanner.



Setup Disc Contents

Install the following software necessary for using the scanner from the supplied Setup Disc.

- **CaptureOnTouch**
This is a dedicated scanning utility for this product.
- **Scanner Driver**
This is the scanner driver for this product.

Third-Party Software

The following software applications are also included on the supplied Setup Disc. For details on installing these applications, refer to the Readme.txt file.

- **Presto! BizCard**
Business card management software from NewSoft Technology Corp. For Mac OS X, run the installer (BizCard/BCRIInstaller) from the Setup Disc to install.
* Presto! BizCard is a registered trademark of NewSoft Technology Corp.
- **OmniPage SE 4 (Windows only)**
Optical character recognition (OCR) software from Nuance Communications Inc. with multiple language support.
- **PaperPort® (Windows only)**
File management application from Nuance Communications Inc. that makes it easy to store, organize, and retrieve digital documents.
 - A separate localized version of the installer is provided for Asian regions (Simplified Chinese, Traditional Chinese, Korean, and Japanese), in addition to a version for all other regions. Install the appropriate version based on your operating environment.
 - In order to receive support of this product, you need to upgrade to a Professional version. For details on upgrading, visit the following URL. <http://www.nuance.com/partneroffer/canon>
- **eCopy PDF Pro Office (Windows only)**
Nuance Communications PDF creation/editing software.
- **Presto! PageManager (Mac OS X only)**
Photo and document management software from NewSoft Technology Corp. Run the following installer (PageManager/PM8Installer) from the Setup Disc to install.

- **Evernote**

- Multi-platform document filing software from Evernote Corp.
- Files required for installing this software must be downloaded via the Internet. For details, refer to page 9 (Windows) or page 13 (Mac OS X).
- For more information on this software, visit the following URL:
<http://www.evernote.com/about/intl/en/>

! IMPORTANT

When scanning with third-party software, use the scanner driver of this scanner to configure scanning conditions. For details on how to open the scanner driver, refer to the manuals supplied with each software application.

STEP 2 Installing the Software

System requirements

To use the scanner, your computer must satisfy the following system requirements.

Computer

CPU:	Intel Core 2 Duo 1.66 GHz or faster
Memory:	1 GB or more
Hard disk:	3 GB or more available space required for installation of all software
USB interface:	Hi-Speed USB 2.0
Monitor:	Resolution of 1024 x 768 (XGA) or better recommended.
Optical drive:	Drive capable of reading DVDs.

Operating system

- Microsoft Windows XP Service Pack 3 or later
- Microsoft Windows XP x64 Edition Service Pack 2 or later
- Microsoft Windows Vista Service Pack 2 or later (32-bit and 64-bit editions)
- Microsoft Windows 7 Service Pack 1 or later (32-bit and 64-bit editions)
- Mac OS X 10.4.11, 10.5.8, 10.6.6

Other requirement

- An ISIS-compatible application (Windows only) or a TWAIN-compatible application that is compatible with the above operating systems.
- .NET Framework 3.5 or later (Windows only)

! IMPORTANT

- If you do not know the requirements for your computer system, contact the store where you purchased the computer or the manufacturer of the computer for more information.
- If you use the scanner with Windows, use the latest USB 2.0 driver made available by Microsoft. For details, consult your local authorized Canon dealer.

- Use the USB interface provided as standard with your computer. However, normal operation is not guaranteed with all USB interfaces, even if present as standard equipment on the computer. For details, consult your local authorized Canon dealer.
- Scanning speeds are lower if your computer's standard USB interface is USB Full-Speed (equal to USB 1.1.)
- The USB cable you are using should be the one originally included with the scanner.
- If the CPU, memory, interface card, and other specifications do not satisfy the installation requirements, the scanning speed may be greatly reduced and transmission may take a long time.
- Even if the computer satisfies the recommended specifications, the scanning speed may vary, depending on the specified scan settings.
- The scanner drivers provided with the scanner do not necessarily operate on all ISIS (only for Windows) or TWAIN-compatible applications. For details, contact your application software retailer.

Precautions for Use in 64-bit Operating Systems

- The scanner driver supplied with this product supports scanning with 32bit applications only.
- Even with 32-bit applications, not all ISIS/TWAIN compliant applications are guaranteed to operate.
- Scanning speed may vary depending on the specifications of your computer.

Precautions for Use in Mac OS X

On a Macintosh computer equipped with a PowerPC CPU, the scanner driver of this product cannot be used with Classic Environment.

The driver will not run correctly when Classic Environment is running so use the scanner when Classic Environment is not running.

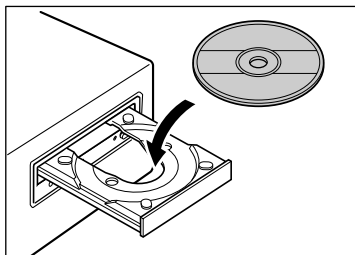
Installing in Windows

! IMPORTANT

- Install the software before connecting the scanner to the computer.
- Log on to Windows as an Administrator.
- Close all other applications before installing the software.

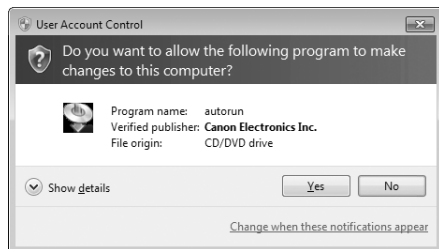
1 Insert the Setup Disc into the DVD drive of the computer.

The setup menu automatically starts up when you insert the disc into the drive. (If the menu does not start up, execute setup.exe from the disc.)

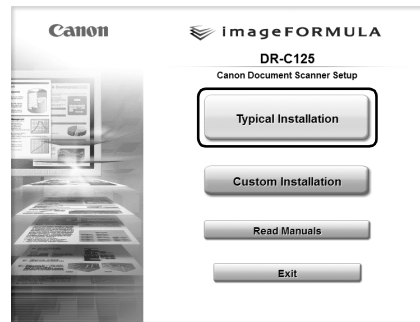


For Windows 7/Vista

If the [User Account Control] screen appears, click [Yes] or [Allow].



2 Click [Typical Installation].



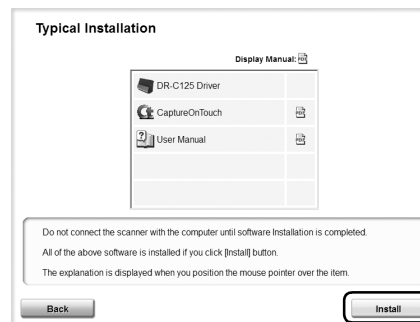
About Installation of Third-Party Software

If you select [Custom Installation], you can choose third-party software applications for installation.

💡 Hint

- If you choose Evernote, the Web browser will start and display a webpage for downloading the software during the installation. Download and install the software following the instructions on the webpage. To install Evernote, you need a connection to the Internet.
- If you want to reinstall only specific software that you have previously uninstalled, select [Custom Installation] and specify the software.

3 Click [Install].



4 Click [Next].



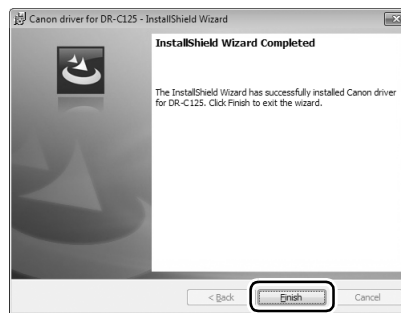
5 Read the license agreement, and click [I accept the terms in the license agreement] and then [Next] if you agree to it.



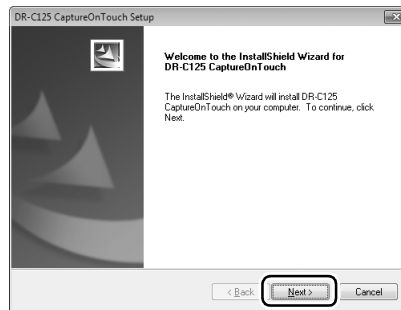
6 Click [Install].



7 When the driver installation is complete, click [Finish].



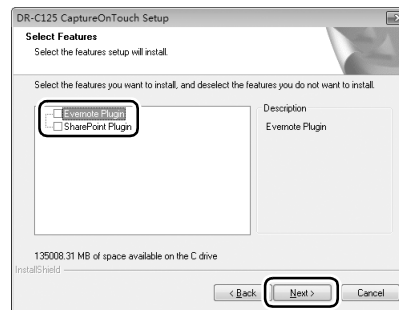
8 Click [Next].



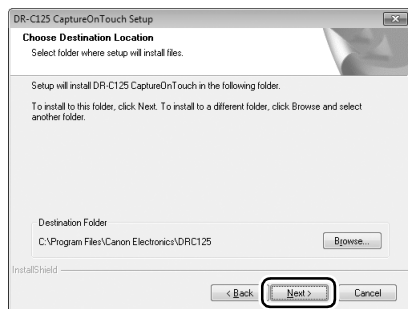
9 Read the license agreement, and click [Yes] if you agree to it.



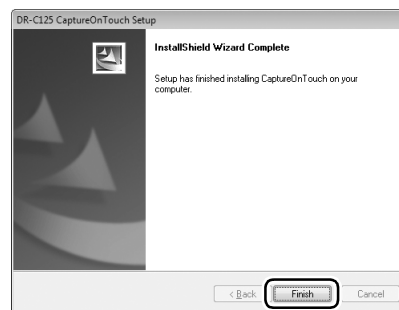
11 Specify whether to install plug-in for Evernote and SharePoint, and click [Next].



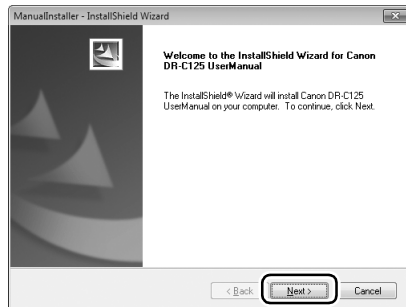
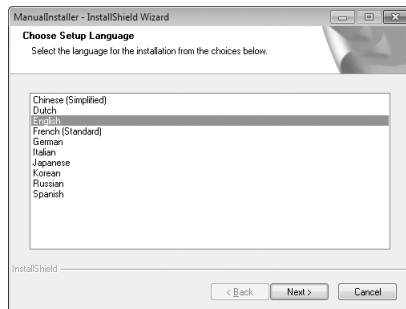
10 Click [Next].



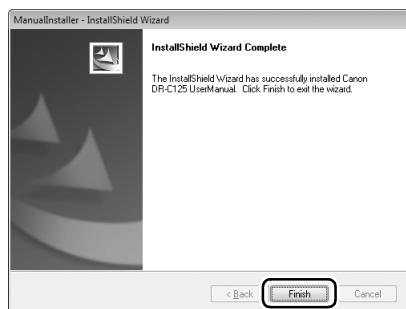
12 When CaptureOnTouch installation is complete, click [Finish].



13 Click [Next].



14 When the User Manual installation is complete, click [Finish].



15 Click [Exit] to finish installing the software.

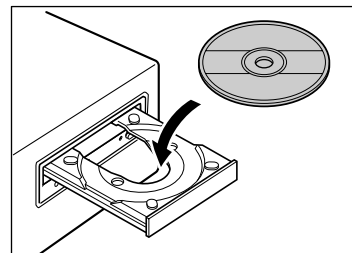


Installing in Mac OS X

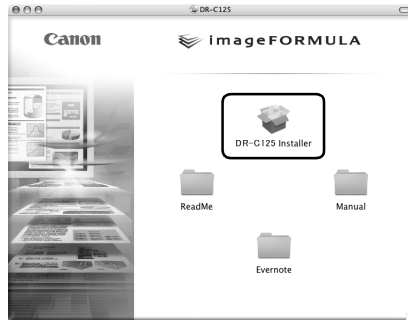
! IMPORTANT

- Install the software before connecting the scanner to the computer.
- Close all other applications before installing the software.

1 Insert the Setup Disc into the DVD drive of the computer.



2 Click [DR-C125 Installer].



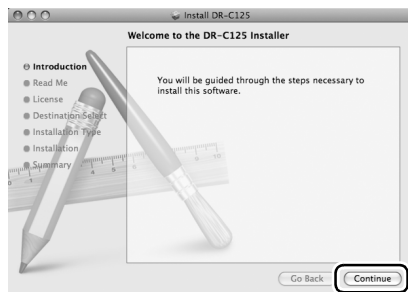
About Installation of Third-Party Software

If you open the folder containing the software instead of selecting [DR-C125 Installer], you can choose third-party software applications for installation.

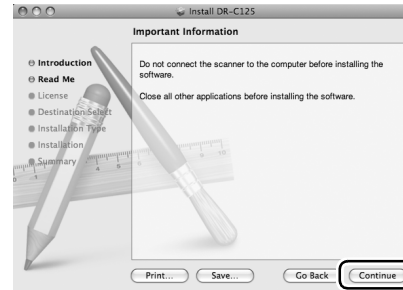
Hint

- If you choose Evernote, the Web browser will start and display a webpage for downloading the software during the installation. Download and install the software following the instructions on the webpage.
To install Evernote, you need a connection to the Internet.
- Evernote cannot be installed in Mac OS X 10.4.x (Tiger).

3 Click [Continue].



4 Click [Continue].



5 Read the license agreement and click [Continue] to accept it.



6 Click [Agree].



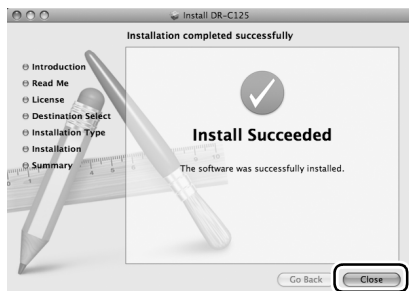
7 Click [Install].



8 Enter the user name and the password with administrator privileges, and click [OK].



9 When the installation is complete, click [Close].

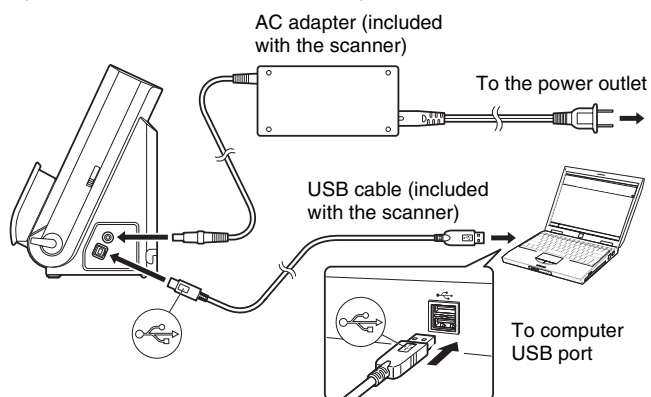


STEP 3 Connecting to a Computer

Connect the scanner to the computer and the power supply.

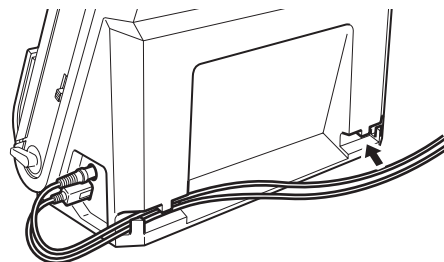
! IMPORTANT

- Do not connect the scanner to the computer before installing the software.
- Before connecting the scanner to the computer, verify that the power of the scanner is OFF. If the power is ON, turn it OFF.



💡 Hint

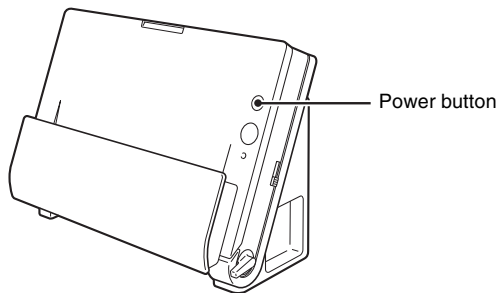
You can secure the cables to the back of the scanner. Make sure there is sufficient slack in the cable when doing so to reduce stress on the connector.



STEP 4 Turning the Power ON

The power of the scanner can be turned ON and OFF with the power button on the front of the scanner.

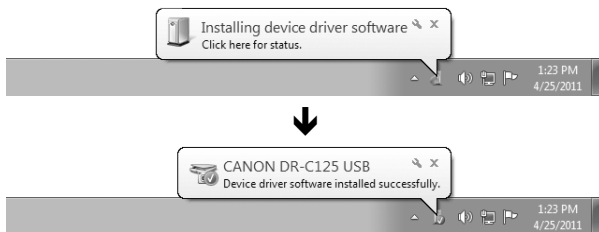
- 1** Make sure that the scanner and computer are connected properly.
- 2** Press the power button.




The power button lights blue when the power turns ON.

Hint

In Windows, a balloon message such as shown below appears on the task bar. If you wait a while, automatic scanner recognition will end and the scanner will become ready to use.





When the scanner is properly connected to the computer, the  (CaptureOnTouch) icon appears on the taskbar (or menu bar) as follows.

Windows taskbar



Mac OS X menu bar



If the taskbar icon appears as  (), the scanner is not properly connected to the computer. Check the status of the power switch and USB cable.

Turning Off the Power

Press and hold the power button until the indicator goes out.

IMPORTANT

- After turning the scanner off, wait at least 10 seconds before turning it back on.
- If you will not be using the scanner for an extended period, you should disconnect the power cord from the AC outlet for safety.

This completes setup.

Introduction

Thank you for purchasing the Canon imageFORMULA DR-C125 Document Scanner.

Please read the following manuals carefully and familiarize yourself with the functions of the scanner before use to ensure you sufficiently understand the functions and make the most of the scanner's capabilities. After reading the manuals, store them in a safe place for future reference.

Manuals for the Scanner

Documentation for this scanner consists of the following manuals.

- **Reference Guide (this manual)**

This describes setup procedures for the scanner. Read this manual when you first use the scanner.

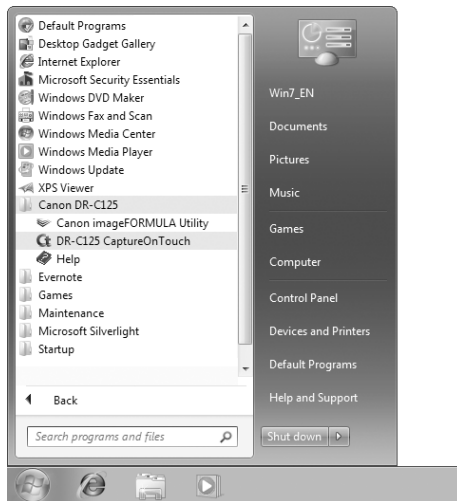
- **User Manual**

This manual contains the operating procedures of the scanner. (PDF electronic manual only)



Hint

- The manuals for this scanner are stored on the Setup Disc as electronic manuals in PDF format.
- If you are using Windows, the User Manual (electronic manual) will be registered to the following location when the software is installed.



Symbols Used in This Manual

The following symbols are used in this manual to explain procedures, restrictions, handling precautions, and instructions that should be observed for safety.

WARNING

Indicates a warning concerning operations that may lead to death or injury to persons if not performed correctly. To use the scanner safely, always pay attention to these warnings.

CAUTION

Indicates a caution concerning operations that may lead to injury to persons, or damage to property if not performed correctly. To use the scanner safely, always pay attention to these cautions.

IMPORTANT

Indicates operational requirements and restrictions. Be sure to read these items carefully to operate the scanner correctly, and avoid damaging the scanner.

Hint

Indicates a clarification of an operation, or contains additional explanations for a procedure. Reading these notes is highly recommended.

Table of Contents

Setup Guide	6	Daily Maintenance	54
Introduction	17	Replacing Consumable Parts	54
Symbols Used in This Manual	17	Auto Power Off Setting	58
Important Safety Instructions	19	Common Problems and Solutions	60
Installation Location	19	Clearing a Paper Jam	62
AC Adapter	19	Specifications	65
Moving the Scanner	20	Replacement parts	66
Handling	20		
Disposal	21		
When sending the scanner for repairs	21		
Features of the Scanner	22		
Names and Functions of Parts	24		
Documents	26		
How to Place Documents	28		
Switching the Feed and Eject Methods	28		
Placing Documents for Standard Feeding	28		
Placing Documents for Bypass Feeding	31		
Placing Cards	32		
Scanning with CaptureOnTouch (Windows)	34		
What is CaptureOnTouch?	34		
Starting and Exiting CaptureOnTouch	34		
Scan First	35		
Select Scan Job	37		
Scanning with Start Button	40		
Scanner Settings	40		
Setting the Output Method	43		
Scanning with CaptureOnTouch (Mac OS X)	44		
What is CaptureOnTouch?	44		
Launching and Quitting CaptureOnTouch	44		
Scan First	45		
Select Scan Job	47		
Scanning with Start Button	50		
Scanner Settings	50		
Setting the Output Method	53		

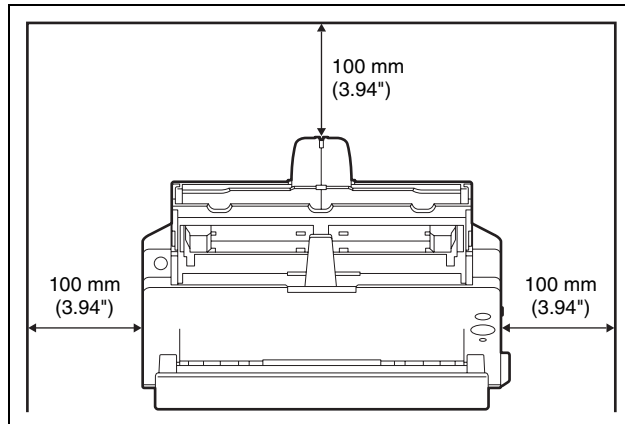
Important Safety Instructions

To ensure the safe operation of this scanner, be sure to read the safety warnings and precautions described below.

Installation Location

The performance of this scanner is affected by the environment in which it is installed. Make sure that the location where the scanner is installed meets the following environmental requirements.

- Provide adequate space around the scanner for operation, maintenance, and ventilation.



- When scanning documents using the straight path, provide adequate space in front of the scanner for scanned document output.
- Avoid installing the machine in direct sunlight. If this is unavoidable, use curtains to shade the scanner.
- Avoid locations where a considerable amount of dust accumulates.
- Avoid warm or humid locations, such as in the vicinity of a water faucet, water heater, or humidifier. Avoid locations where ammonia gas is emitted. Avoid locations near volatile or flammable materials, such as alcohol or paint thinner.
- Avoid locations that are subject to vibration.

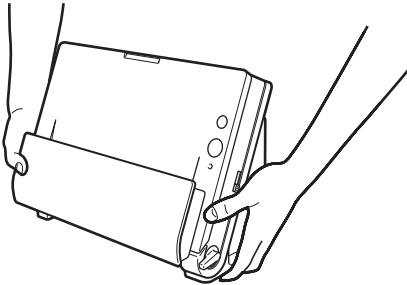
- Avoid exposing the scanner to rapid changes in temperature. If the room in which the scanner is installed is cold but rapidly heated, water droplets (condensation) may form inside the scanner. This may result in a noticeable degradation in scanning quality. The following conditions are recommended for optimal scanning quality:
Room temperature: 10°C to 32.5°C (50°F to 90.5°F)
Humidity: 20% to 80% RH
- Avoid installing the scanner near equipment that generates a magnetic field (e.g. speakers, televisions, or radios.)

AC Adapter

- Connect only to a power outlet of the rated voltage and power supply frequency (120 V, 60 Hz or 220-240 V, 50/60 Hz depending on your region).
- Do not connect other electrical equipment to the same power outlet to which the scanner is connected. Also, when using an extension cord, make sure that the extension cord is rated for the current requirements of the scanner.
- Never try to take the AC adapter apart or modify it in any way, as this is dangerous.
- The power cord may become damaged if it is often stepped on or if heavy objects are placed on it.
- Do not use the power cord while it is coiled.
- Do not pull directly on the power cord. When disconnecting the power cord, grasp the plug and remove it from the outlet.
- Keep the area around the power cord clear of objects so that the power cord can be disconnected easily in an emergency.
- Do not use an AC adapter other than the one provided with the scanner. Do not use the AC adapter provided with the scanner with other products.
- If you have any questions regarding the power supply, contact your local authorized Canon dealer or service representative for further information.

Moving the Scanner

- When moving the scanner, always hold it with both hands to avoid dropping it. The scanner weighs approximately 2.4 kg (5.3 lb).
- Make sure to disconnect the interface cable and AC adapter before moving the scanner. If the scanner is transported with these items connected, the plugs and connectors may be damaged.



Handling

⚠ WARNING

Note the following precautions whenever using the scanner. Failure to do so may result in a fire or electric shock.

- Never use alcohol, benzene, paint thinner, aerosol sprays, or any other highly flammable substance near the scanner.
- Do not cut, damage, or modify the power cord. Do not place heavy objects on the power cord, and do not pull or excessively bend the power cord.
- Never connect the power cord when your hands are wet.
- Do not connect the scanner to a multi plug power strip.
- Do not knot or coil the power cord as this may result in a fire or electric shock. When connecting the power cord, make sure that the power plug is securely and completely inserted into the power outlet.
- Do not use a power cord or AC adapter other than the ones provided with this scanner.
- Do not take the scanner apart or modify it.
- Never try to take the AC adapter apart or modify it in any way, as this is dangerous.
- Do not use flammable spray near the scanner.

- When cleaning the scanner, push the power button to turn it OFF and disconnect the power cord from the power supply.
- Clean the scanner using a slightly dampened cloth which has been well wrung out. Never use alcohol, benzene, paint thinner, or any other flammable substances.
- If the scanner makes strange noises, or gives off smoke, heat, or strange odors, or the scanner does not function or other abnormalities occur when you use the machine, immediately push the power button to turn it off, and disconnect the power plug from the power outlet. Then, contact your local authorized Canon dealer or service representative to have the unit serviced.
- Do not drop the scanner, or subject it to impact or strong shock. Should the scanner ever become damaged, immediately push the power button to turn it OFF, and disconnect the power plug from the power outlet. Then, contact your local authorized Canon dealer or service representative to have the unit serviced.
- Before moving the scanner, be sure to push the power button to turn it OFF, and disconnect the power plug from the power outlet

⚠ CAUTION

- Do not install the scanner on a surface that is unstable or tilted, or in an area subject to excessive vibrations, as this may cause the scanner to fall, resulting in personal injury or damage to the scanner.
- Never place small metal objects such as staples, paper clips, or jewelry on the scanner. These items may fall into the scanner, and cause a fire or electric shock. Should such objects ever fall inside the scanner, immediately push the power button to turn it OFF, and disconnect the power plug from the power outlet. Then, contact your local authorized Canon dealer or service representative to have the unit serviced.
- Do not install the scanner in a humid or dusty location. Doing so might cause a fire or electric shock.
- Do not place objects on top of the scanner. Such objects may tip or fall over, resulting in personal injury.
- Connect only to a power outlet of the rated voltage and power supply frequency (120 V, 60 Hz or 220-240 V, 50/60 Hz depending on your region).
- When unplugging the power cord, grasp it firmly by its plug. Do not pull directly on the power cord, as this may damage or expose the cord's internal wiring, resulting in a fire or electric shock.
- Leave sufficient space around the power plug so that it can be unplugged easily. If objects are placed around the power plug, you will be unable to unplug it in an emergency.

- Do not allow water or flammable substances (alcohol, paint thinner, benzene, etc.) to spill into the scanner, as this may result in a fire or electric shock.
- Push the power button to turn the scanner OFF for safety when not using the scanner for a long period of time, such as overnight. Also, push the power switch to turn it OFF, and disconnect the power cord from the power outlet for safety when the machine will not be used for an extended period of time, such as during consecutive holidays.
- Do not wear loose clothing or jewelry that may get caught in the scanner while you are using it. This may result in personal injury. Be extra careful of neckties and long hair. If anything becomes caught in the scanner, immediately disconnect the power cord to stop the scanner.
- Be careful when loading paper into the scanner and when removing jammed paper. It is possible to cut your hand on the edge of a sheet of paper.

Disposal

When disposing of this scanner, be sure to follow all local ordinances and laws or consult with the retailer who sold you the scanner.

When sending the scanner for repairs

When a request is made for repairs, the scanner needs to be sent to the specified address. When sending the scanner, use the packing box in which it came. Firmly secure the scanner with packaging material when you place it in the packing box.

Features of the Scanner

The main features of the document scanner DR-C125 are described below.

● Compact Design

The scanner has a compact size of 300 (W) x 336 (H) x 235 (D) (11.81" (W) x 13.2" (H) x 9.25" (D)) mm when the document feed is open. A newly designed feed mechanism saves space by eliminating the need for space to eject paper at the front of the scanner.

● Fast Document Feeding

Documents can be scanned at a speed of up to 25 pages per minute (when scanning one-sided or two-sided documents of A4 size at 200 dpi).

● Two Eject Paths for Scanning a Variety of Documents

Use the U-turn path to scan paper of standard thickness, or use the straight path to scan cards and other thick documents.

● High Image Quality

The 600 dpi optical resolution sensor incorporated in the scanner enables documents to be scanned with high image quality.

● USB 2.0 Interface

The scanner supports Hi-Speed USB 2.0.

● Color/Grayscale Support

Documents can be scanned in 24-bit color or 256-level grayscale.

● Supports a Variety of Scanning Modes

The scanner supports the following scanning modes, depending on the document type:

- Single-sided or double-sided scanning (with Skip Blank Page function)
- Continuous or single sheet feed

● Card Scan

You can scan business or ID cards.

● Paper Size Detection

The scanner automatically detects the size of a scanned document and eliminates any unnecessary space around the edges of the image when storing the image, even when storing a document of irregular size.

● Auto Color Detection

The scanner detects whether the scanned document is in color, grayscale, or black and white (binary), and saves the image accordingly.

● Full Auto Mode

A Full Auto Mode is provided in CaptureOnTouch and the scanner driver to allow scanning under automatically determined conditions. Scanning conditions such as the color mode and page size are set automatically based on the document being scanned.

● Auto Resolution Detection

When enabled in the CaptureOnTouch or scanner driver settings, this function detects the content of documents and determines the scanning resolution automatically.

● Folio Scan

You can scan folded documents. The scanner will scan both sides and combine the scanned images into a single image.

● Deskew

The scanner straightens scanned images when it detects that the document was placed askew.

● Ultrasonic Double Feed Detection

Ultrasonic waves are used to detect pages that are fed at the same time as well as the space between pages. Scanning stops if a double feed is detected.

● Text Enhancement Modes

The scanner is equipped with the Advanced Text Enhancement Mode (only for Windows), for enhancing the text of documents with dark or uneven backgrounds, and the Advanced Text Enhancement II mode, for enhancing the text when both the text and background are light.

These modes may not work, depending on the type of document.

● Color Drop-out

The scanner is equipped with a Color Drop-out function that enables you to specify a color for the scanner to omit from the scanned image during black and white or grayscale scanning.

● Skip Blank Page Function

The scanner is equipped with a Skip Blank Page function that enables you to scan a document without storing images of blank pages, regardless of whether each page of the document is two-sided or one-sided. Both sides are scanned, but saving the image is skipped for scan images judged to be from a blank page.

- **Prescan Function**

The scanner is equipped with a Prescan function that allows you to adjust the contrast and brightness of a prescanned image and then send the adjusted image to the application software, without needing to scan the document again.

- **Scan First**

Pressing Start Button starts CaptureOnTouch. You can then perform a scan simply by following the on-screen guidance.

- **Select Scan Job**

You can register scanning conditions and methods for processing scanned images as jobs, and register up to 10 jobs in CaptureOnTouch. By simply selecting a registered job, you can perform scanning operations in a determined order.

- **Auto Start**

The scanner is equipped with an auto start function, which enables scanning to be automatically started when a document placed in the feeder is detected.

- **Sleep Mode**

The scanner is designed to save energy by entering the sleep mode when it is not scanning documents.

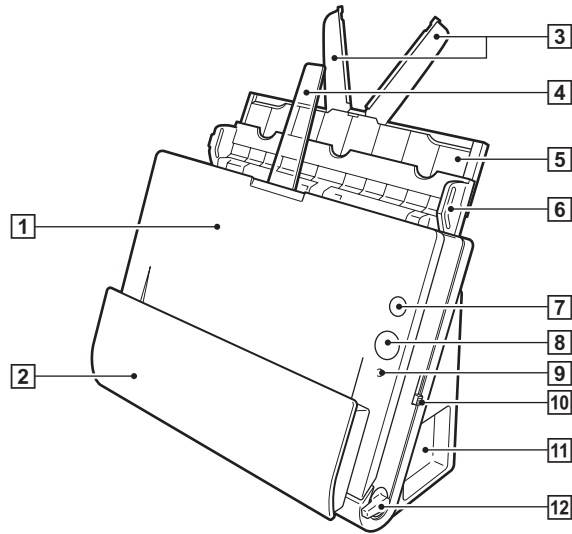


Hint

Some functions may not be available depending on the software you are using.

Names and Functions of Parts

Front View



1 Front Unit

Open this when removing paper jammed inside the scanner, cleaning the inside of the scanner, or replacing rollers.

2 Document Eject Pocket

Scanned documents are output here.

3 Feed Extension Plates

Pull this out when loading long documents.

4 Eject Support

Open this when loading long documents.

5 Feed Support

Pull out this to support loaded documents.

6 Document Feed Tray

Open this when loading documents for scanning.

7 Power Button

This turns the scanner ON and OFF.

8 Start Button

This starts scanning the document loaded in the document feed tray

9 Feed Selection Indicator

This indicates the way documents are currently being fed in accordance with the position of the feed selection lever.

Lever position	Indicator color
Upper (bypass feeding)	Orange
Lower (standard feeding)	Black

10 Feed Selection Lever

This changes the way documents are fed.

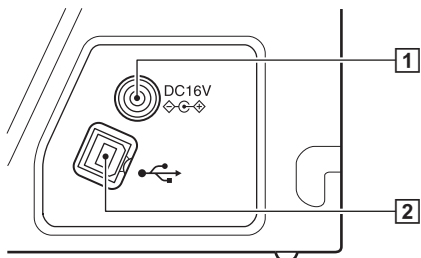
11 Connectors

Connectors for connecting an AC adapter and USB cable are available. (See p. 25)

12 Eject Selection Lever

Use this lever to change the way documents are ejected.

Connectors



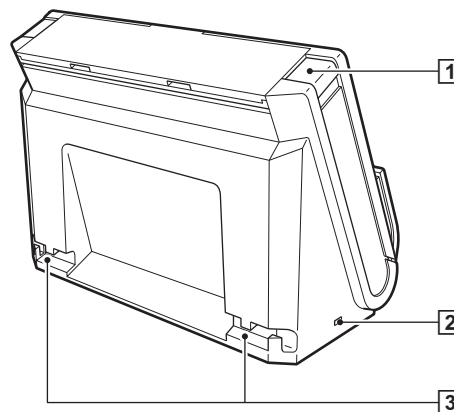
1 Power Connector

Connect the supplied AC adapter to this connector.

2 USB Connector

Connect the supplied USB cable to this connector.

Back View



1 OPEN Button

Press this button to open the front unit.

2 Kensington Slot

Connect an anti-theft key chain or the like.

3 Cable Grooves

Secure the USB cable and power cord that are connected to the scanner along the rear of the scanner. Use these when you want to run the cables on the side opposite the connectors.

Documents

The scanner can scan documents ranging in size from business cards to Legal/A4. The document sizes that this scanner can scan are shown below.

Plain Paper

Size

Width: 50.8 mm to 216 mm (2" to 8.5")

Length: 53.9 mm to 356 mm (2.12" to 14")*

Paper thickness:

When U-turn path: 52 to 128 g/m² (14 to 34 lb bond)
0.06 to 0.15 mm (0.0024" to 0.0059")

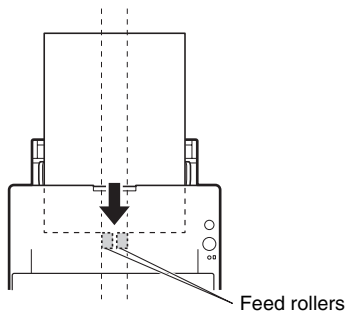
When straight path: 40 to 209 g/m² (11 to 58 lb bond)
0.05 to 0.25 mm (0.002" to 0.0098")

* Setting the scanner to Long Document mode enables documents up to 3,000 mm (118.1") long to be scanned. Refer to the *User Manual* for detailed information.

! IMPORTANT

The documents to be scanned must satisfy certain criteria. Read the following items carefully.

- When scanning multiple documents of different sizes, place the documents so that they cover the entire span of the feed rollers.



- It is recommended that documents exceeding 356 mm (14") in size are fed one sheet at a time.
- Use the straight path when scanning documents that are 70 mm (2.76") long or less.

- Scanning documents before the ink is dry can cause problems with the scanner. Always make sure that the ink on a document is dry before scanning it.
- Scanning documents that are written in pencil or similar material may make the rollers and scanning glass dirty, which can lead to smudges on the scanned image and transfer the dirt to subsequent documents. Always clean the internal parts of the scanner after scanning such documents.
- When scanning a two-sided document that is printed on thin paper, the image on the opposite side of each page may show through. In this case, adjust the scanning intensity in the application software before scanning the document.
- It is recommended that thin documents are fed one sheet at a time.
- Scanning the following types of documents can cause a paper jam or malfunction. To scan such a document, make a photocopy of the document and then scan the photocopy.



There are creases or fold lines.



Carbon paper



There are curls.



The surface is coated.



There are tears.



Extremely thin document such as semi-transparent thin paper.



There are clips or staples.



Documents with excessive paper dust particles.

Business Card

Size: 50 mm x 53.9 mm (1.97" x 2.12") or larger
Paper weight: 300 g/m² (80 lb bond) 0.35 mm (0.0138") or less
Orientation: Vertical feeding only

! IMPORTANT

If a stack of business cards cannot be fed properly, reduce the number of cards in the stack.

Card (plastic or laminated)

Size: 53.9 mm x 85.5 mm (2.12" x 3.37") (ISO standard)

Card thickness: 0.76 mm (0.03") or less

Orientation: Horizontal feeding only

Feed path: Straight path only

Embossed cards can be scanned.

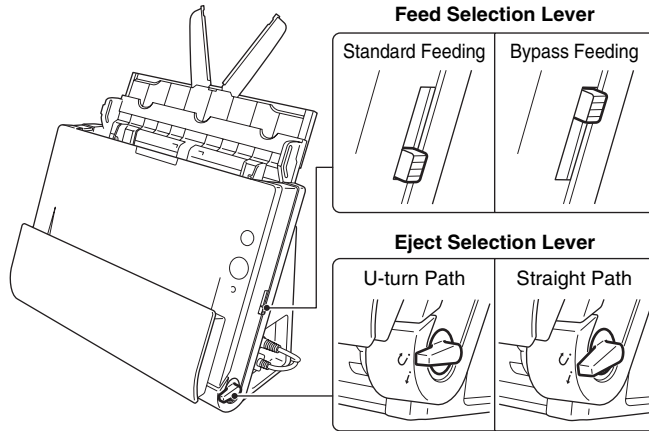
⚠ CAUTION

- Use the straight path when scanning cards.
- If you place cards to be fed vertically, they may not be ejected properly, and cards that get jammed may be damaged when you remove them. Take care of the orientation when placing cards.
- Embossed cards may not be able to be scanned correctly, depending on the type of embossment.

How to Place Documents

Switching the Feed and Eject Methods

Use the two levers on the scanner to switch the feed and eject methods based on the type of document you are scanning.



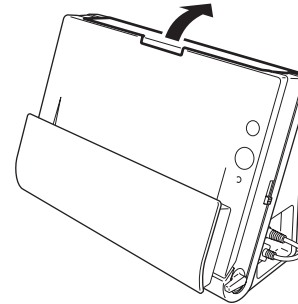
The feed and eject methods and lever positions for each document type are as follows.

Document type	Feed method (lever position)	Eject method (lever position)
Standard paper and business cards	Standard feeding (lower)	U-turn path (upper) or straight path (lower)
Plastic cards, thick paper, thin paper, and bound or fastened paper	Bypass feeding (upper)	Straight path (lower)

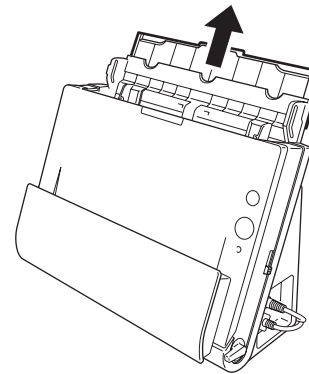
Placing Documents for Standard Feeding

Ordinarily, standard feeding should be used when scanning multiple documents of a standard size at one time. Standard feeding enables the multiple documents to be fed while separating each page.

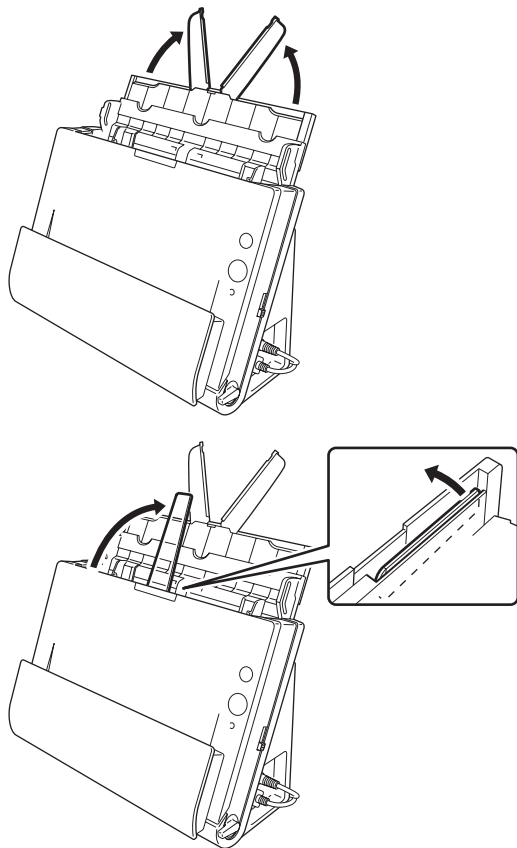
- 1 Open the document feed tray.



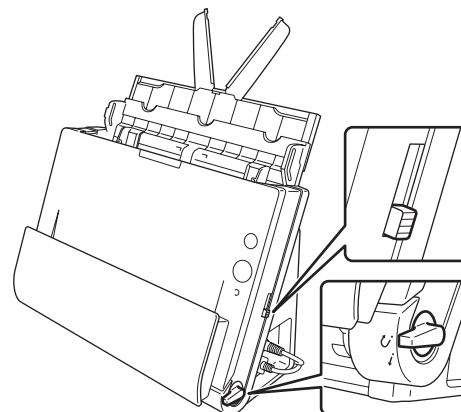
- 2 Pull out the feed support.



- 3** When scanning long documents, pull out the feed extension plates and eject support.

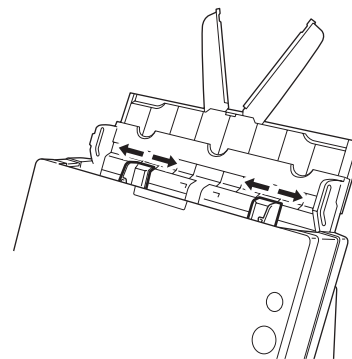


- 4** Set the feed selection lever and the eject selection lever.
Set the feed selection lever to the standard feeding position (lower position).
Set the eject selection lever to the U-turn path position (U).



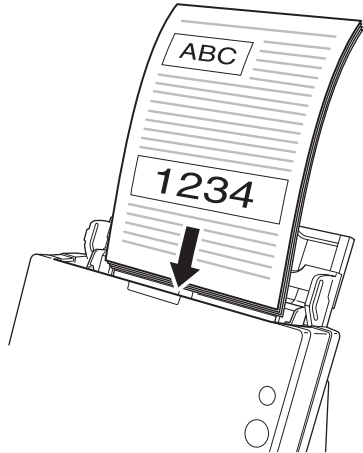
When scanning documents that contain both standard paper and plastic cards, use the straight path.

- 5** Adjust the document guides to fit the width of the document to be scanned.

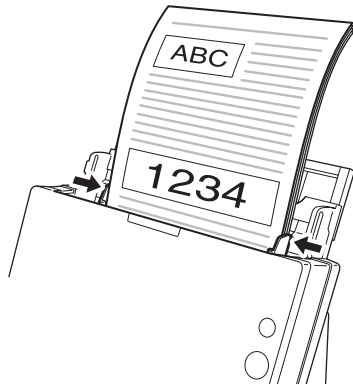


6 Place the document.

Insert the document in the feed tray so that the front is facing forward and the top is facing upward.

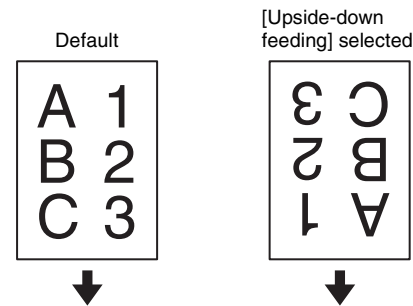


After inserting the document in the document feeder, align the document guides with both edges of the document.



! IMPORTANT

- When placing documents into the feed tray, take care not to cut your hands on the edges of the paper.
- Make sure that the document does not exceed the loading limit marks (▼) on the document guides. Up to 30 pages of ordinary plain paper (80 g/m²) can be loaded at the same time.
- Before you place a document, check to make sure it does not contain paper clips, staples, or other small metal objects. These items may cause a fire or electrical shock, damage the document, or cause a paper jam or scanner malfunction.
- Do not wear loose clothing or jewelry that may get caught in the scanner while you are using it. This may result in personal injury. Be extra careful of neckties and long hair. If anything gets caught in the scanner, immediately turn OFF the power switch, and disconnect the power cord from the power outlet to stop scanning.
- Always smooth out any folds or curls in your documents before placing them into the feeder. If the leading edge of a document is curled, it may cause a paper jam.
- If feeding stops due to a system error or paper jam while the scanner is scanning, resolve the problem, make sure that the scanned image of the last page that was successfully fed has been stored, and then resume scanning the remaining document pages.
- After you finish scanning, close the document feed tray to prevent damage to the scanner while it is not being used.
- Although standard feeding can be used in combination with the straight path when scanning, multi-page documents will be ejected in reverse order in such cases.
- If you select the [Upside-down feeding] check box in the scanner driver settings, you can insert documents into the scanner in the opposite orientation. Refer to the *User Manual* for detailed information.

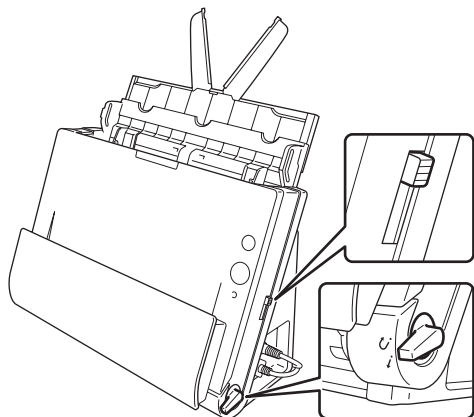


Placing Documents for Bypass Feeding

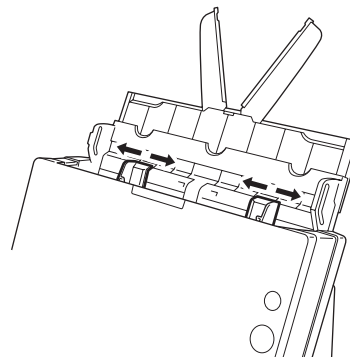
When scanning a thick document one page at a time or scanning a document that has multiple pages fastened together, set document feeding to bypass. This enables the placed document to be scanned without the pages being separated, regardless of the number of pages.

1 Set the feed selection lever and the eject selection lever.

Set the feed selection lever to the bypass position (upper position). The feed selection indicator will light orange.
Set the eject selection lever to the straight path position (*i*).



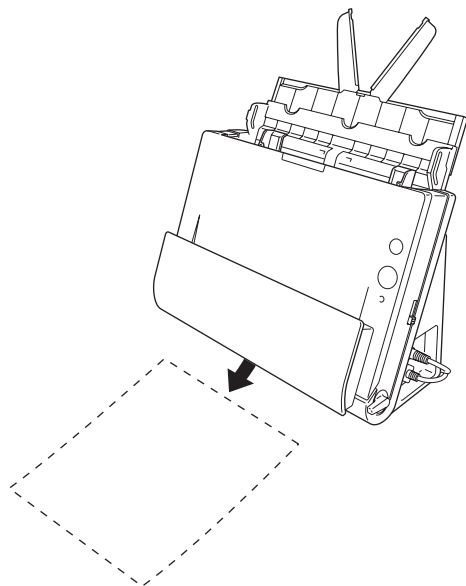
2 Adjust the document guides to fit the width of the document.



3 Place the document in the document feed tray.

! IMPORTANT

- With the straight path, documents are ejected at the front of the scanner. Do not place anything that will block output near the document eject area. Also, install the scanner on a smooth surface to enable documents to be smoothly ejected.

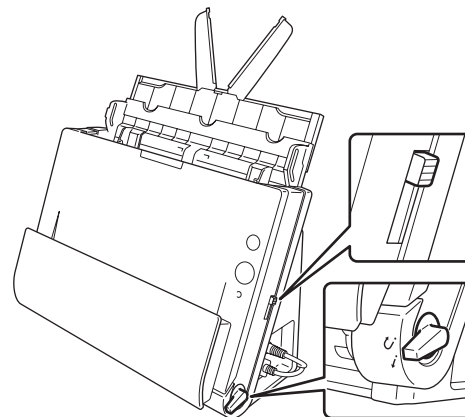


- When scanning multiple page documents that are fastened together, such as invoices, place the documents so that the edge that is fastened together is facing down.

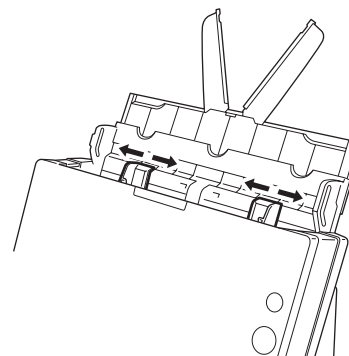
Placing Cards

1 Set the feed selection lever and the eject selection lever.

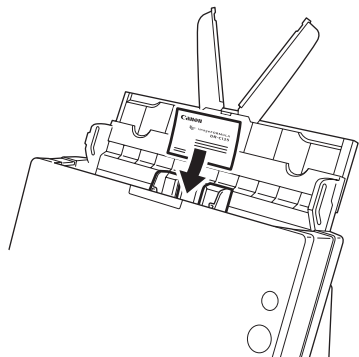
- Set the feed selection lever to the bypass position (upper position). The feed selection indicator will light orange.
Set the eject selection lever to the straight path position (*i*).



2 Adjust the document guides to fit the width of the card to be scanned.

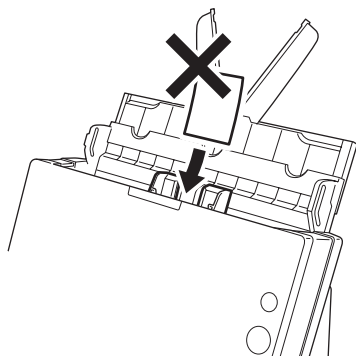


3 Place the card horizontally with the top edge facing upward.



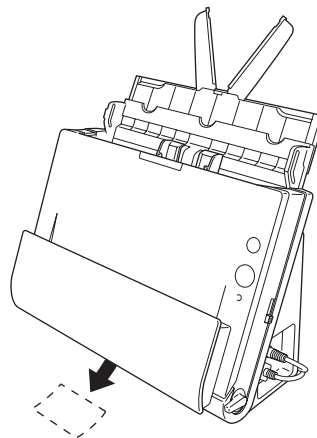
CAUTION

- Place the card one at a time.
- If you place cards to be fed vertically, they may not be ejected properly, and cards that get jammed may be damaged when you remove them. Take care of the orientation when placing cards.



IMPORTANT

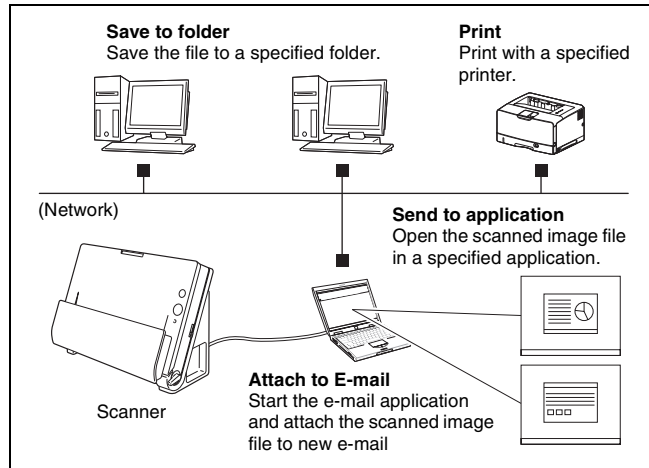
With the straight path, documents are ejected at the front of the scanner. Do not place anything that will block output near the document eject area. Also, install the scanner on a smooth surface to enable documents to be smoothly ejected.



Scanning with CaptureOnTouch (Windows)

What is CaptureOnTouch?

CaptureOnTouch is a scanning application that allows you to scan a document with a simple operation by following the instructions on the screen.



CaptureOnTouch is provided with multiple scanning methods that can be selected according to the purpose and application.

Scan First

Scan a document and then select the output method. This method allows you to easily scan a document by just following the instructions on the screen.

Select Scan Job

Register scanning settings from the scanning conditions to the output method as jobs, and then scan a document by just selecting the job that suits your purpose. This method is convenient when you want to repeat scanning using a set procedure.

Scan with Start Button

Scan First is pre-assigned to the Start button of the scanner, so you can load a document and then start scanning by just pressing the Start button. You can also assign any job to the Start button.

File Formats of Saved Images


You can specify one of the following file formats for scanned images when using any output method other than [Print].

- PDF
- TIFF
- JPEG
- BMP
- PPTX (file format for Microsoft PowerPoint 2007 or later)

Starting and Exiting CaptureOnTouch

By default, CaptureOnTouch becomes resident in the system when you start your computer.





Double-click  (CaptureOnTouch icon) in the taskbar to start CaptureOnTouch and display the main window.

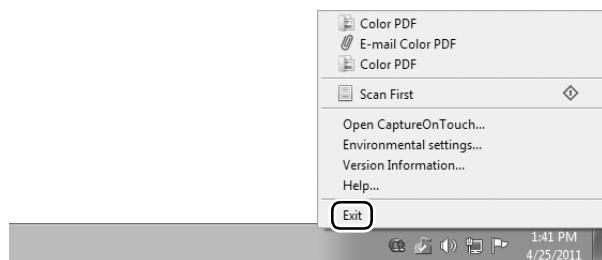
Hint

- You can also start CaptureOnTouch from the Start menu. Click [Start] – [All Programs] – [Canon DR-C125] – [DR-C125 CaptureOnTouch].
- The first time you start CaptureOnTouch on a computer with Evernote installed, a message for confirming the registration of jobs for sending scanned images to Evernote appears. If you click the [Yes] button, two jobs for Evernote are registered to CaptureOnTouch.
- The interval between the time you press the Start button on the scanner and the time scanning begins is shortened when the [Make CaptureOnTouch resident] check box is selected in the [Basic settings] tab of the [Environmental settings] dialog box. Refer to the *User Manual* for detailed information.

Exiting CaptureOnTouch

To close the CaptureOnTouch window, click  at the top of the window. This closes the window, but CaptureOnTouch will continue to reside in the system.

To quit the CaptureOnTouch application, click  (CaptureOnTouch icon) in the taskbar, and select [Exit] from the menu.



CaptureOnTouch becomes no longer resident in the system and the icon disappears from the taskbar.

Restarting CaptureOnTouch

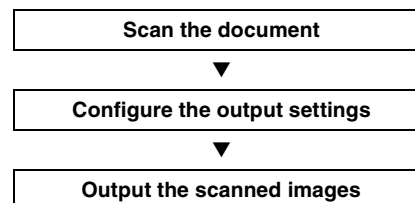
To use CaptureOnTouch after it has been made not resident in the system, use one of the following procedures to restart it.

CaptureOnTouch will start and become resident in the system again.

- Click [Start] – [All Programs] – [Canon DR-C125] – [DR-C125 CaptureOnTouch].
- Press the Start button on the scanner (in this case, the main screen of CaptureOnTouch will open and scanning will start using the scan method assigned to the Start button).

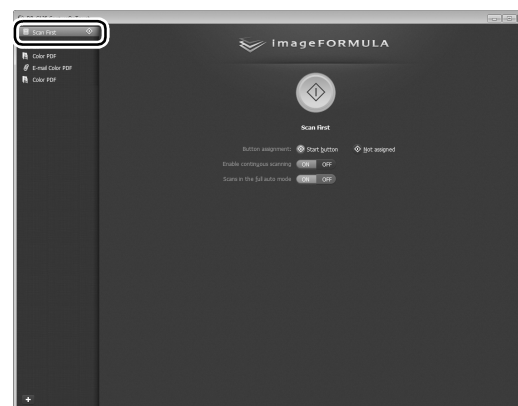
Scan First

Operation Flow



1 Place the document in the scanner.

2 Click [Scan First].



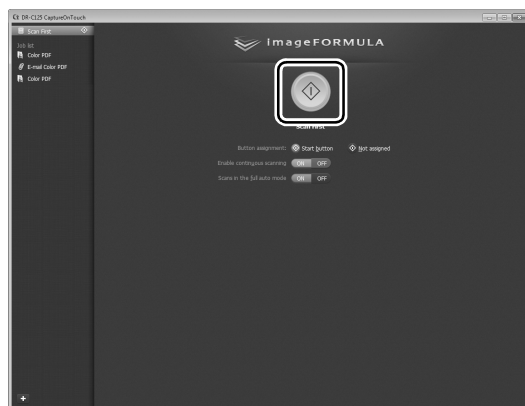
The top screen of Scan First appears.

3 Set the scan method in the top screen.



- ① Specify whether to enable continuous scanning. When scanning multiple documents as one scanned image or splitting up a large document to scan in parts, select [ON] to enable continuous scanning.
- ② Specify whether to scan the document in full auto mode. When you want to specify arbitrary scanning conditions, select [OFF] and configure the scanner settings. (See p. 40)

4 Click the Start button.



The document is scanned. While scanning is in progress, the number of pages scanned is displayed in addition to the scanner settings.

When scanning is finished, the Output settings screen appears.

! IMPORTANT

If you configure scanning conditions that consume a large amount of the computer's memory, scanning may stop because of insufficient memory. If an error message appears due to insufficient memory while scanning is in progress, exit the application, change the scanning conditions, and then try scanning again.



Hint

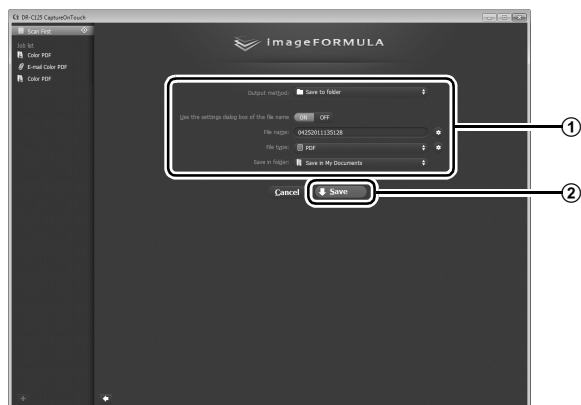
If a document is scanned when [Enable continuous scanning] is set to [ON], the continuous scanning screen (see p. 42) appears when scanning of the document is finished.



If you place the next document and click [Scan], scanning of the document starts.

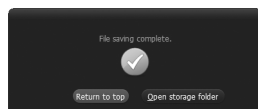
When scanning of all the documents is finished, click [Next step].

5 Configure the settings related to output and then output the scanned images.



- ① Configure the settings related to output. (See p. 43)
- ② Click this button to output the scanned images. The button name differs for each output method. For example, it is [Save] when the output method is set to [Save to folder].

When output is finished, the complete screen appears. Scan First is now finished.

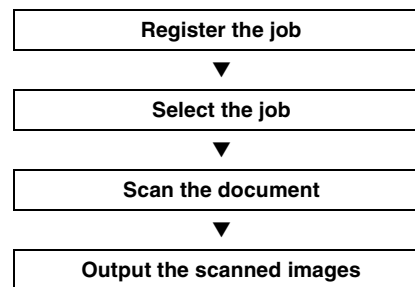


Hint

- Clicking [Return to top] returns to the main screen of Scan First.
- When [Attach to E-mail] or [Print] is specified as the output method, you can click [Open storage folder] to open the folder in which the scanned images were saved.

Select Scan Job

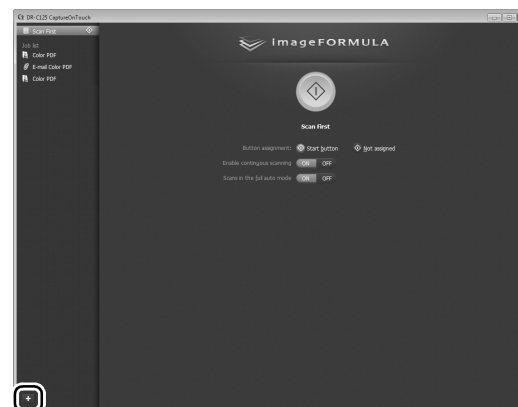
Operation Flow



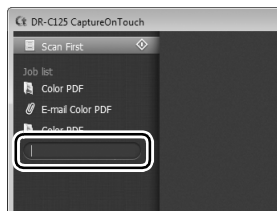
Registering and Editing Jobs

In CaptureOnTouch, up to 10 jobs can be registered for use with Select Scan Job.

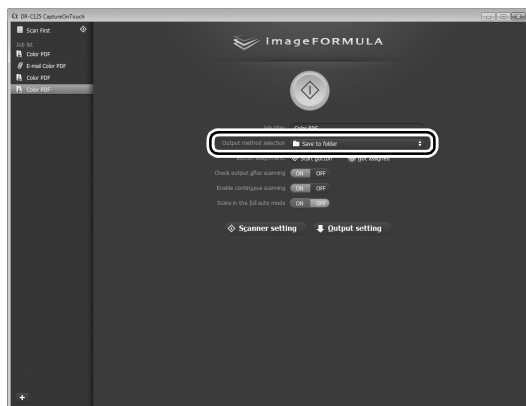
1 Click the button.



2 Enter the job name, and press the Enter key.

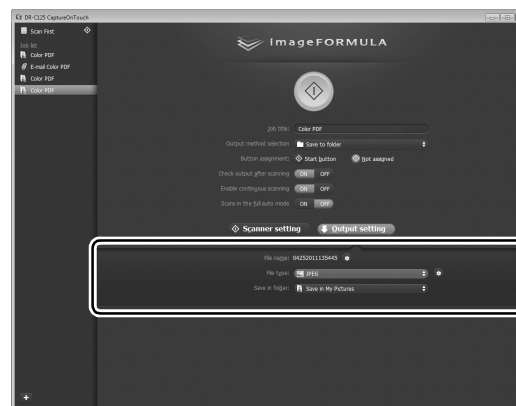


3 Specify the output method of the job. (See p. 43)



4 Click [Output settings], and configure the output settings.

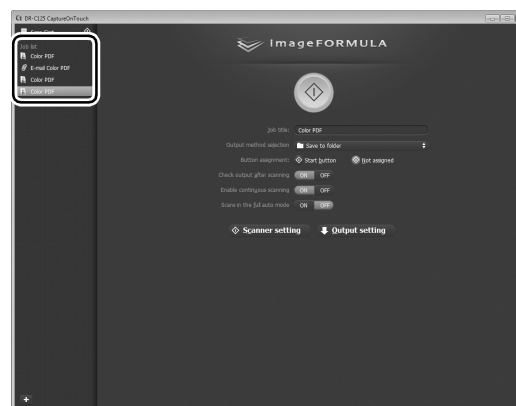
The output setting items differ depending on the specified output method. For details on the setting items, see the Help of CaptureOnTouch.



Selecting a Job and Scanning

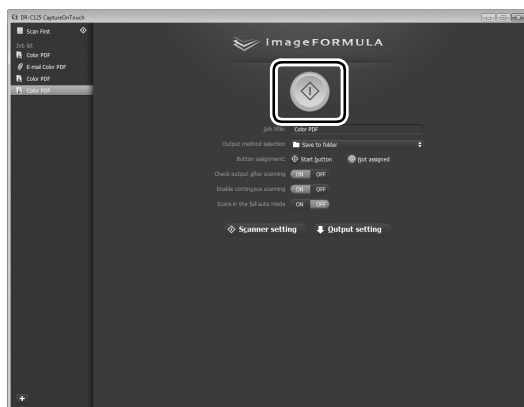
1 Place the document in the scanner. (See p. 28)
The top screen of Select Scan Job appears.

2 Click a job.



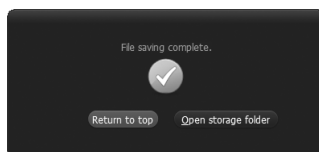
Hint

- If you set [Check output after scanning] to [ON], you can check the output settings after scanning.
- If you set [Enable continuous scanning] to [ON], you can continue scanning after all the pages of the document are scanned.

3 Click the Start button.

The document is scanned. While scanning is in progress, the number of pages scanned is displayed in addition to the scanner settings.

When all the pages of the document are scanned, the scanned images are output according to the registered job settings and the complete screen appears.

**IMPORTANT**

If you configure scanning conditions that consume a large amount of the computer's memory, scanning may stop because of insufficient memory. If an error message appears due to insufficient memory while scanning is in progress, exit the application, change the scanning conditions, and then try scanning again.

Hint

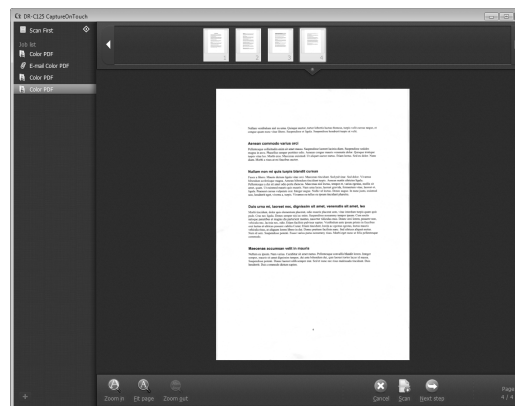
- Clicking [Return to top] returns to the top screen of Select Scan Job.
- When [Attach to E-mail] or [Print] is specified as the output method, you can click [Open storage folder] to open the folder in which the scanned images were saved.

When [Enable continuous scanning] is set to [ON]

The continuous scanning screen (see p. 42) appears when all the pages of the document are scanned.

If you want to scan another document, place the document in the scanner and then click [Scan].

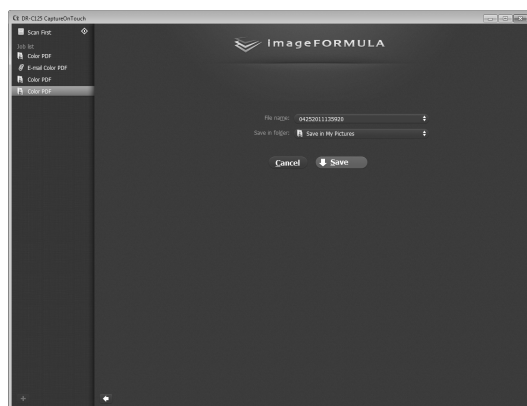
When scanning of all the documents is finished, click [Next step].



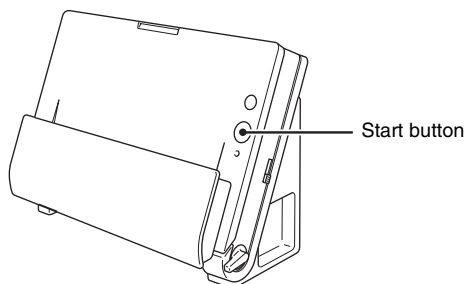
When [Check output after scanning] is set to [ON]

The Output Confirmation screen appears before the scanned images are output.

Change the settings for the output method if necessary and then click the output button. The name of the output button differs for each selected output method.

**Scanning with Start Button**

By default, Scan First is pre-assigned to the Start button.



If you place the document and press the Start button, CaptureOnTouch starts and scanning starts.

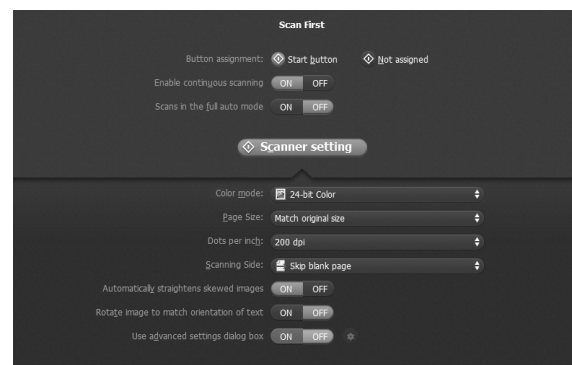
Hint

You can also assign any job to the Start button. If a job is assigned, the document is scanned and the scanned images are output according to the settings of the job. The main window of CaptureOnTouch closes automatically 5 seconds after the output process finishes.

Scanner Settings

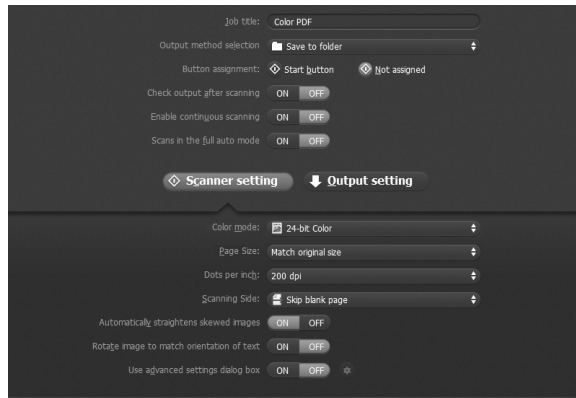
By default, CaptureOnTouch scans with scanning conditions that match the document because scanning in full auto mode is enabled. If you want to specify, for example, the scanning mode and document size, you can configure the desired scanning conditions in the scanner settings.

The scanner setting items are common to Scan First and Select Scan Job.

When Scan First:

For Scan First, configure the scanner settings before you start scanning.

When Select Scan Job:



For Select Scan Job, configure the scanner settings for each job.

Setting Basic Items

Scanner settings include the basic items that are configured in [Scanner setting], and the setting items that are configured in the advanced settings dialog box. The settings in the advanced settings dialog box are applied for settings other than the basic items. The settings in the driver settings dialog box are applied for any other settings.

Color mode

Select from the following modes for scanning documents.

Detect automatically	Detects whether the document is color or gray and then scans.
24-bit Color	Scans the document in color.
Grayscale	Scans the document in Grayscale.
Black and White	Scans the document in black and white (binary).

Page Size

Specify the page size of the document.

If you specify [Detect automatically], the page size of the scanned document is detected and the images are saved at the detected size.

Dots per inch

Specify the scanning resolution.

When [Detect automatically] is specified, the resolution is detected automatically from the content of the scanned document.

Scanning Side

Specify whether to scan only one side or both sides of a document.

When [Skip blank page] is specified, any blank page detected within the document is skipped during scanning.

When scanning a folded document, select [Folio].


Automatically straightens skewed images

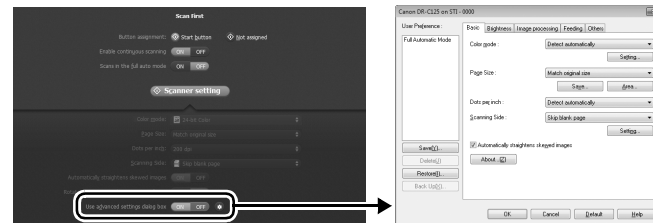
When a document is scanned skewed, the skewed scanned images are detected and then straightened.

Rotate image to match orientation of text

The orientation of text in scanned images is detected, and the images are rotated so that the text is correctly oriented.

Use advanced settings dialog box

Configure scanner settings other than the basic items in the advanced settings dialog box (scanner driver). To open the scanner driver, select [ON] and then click the  button.



For details on the setting items, see the Help of the driver settings dialog box.

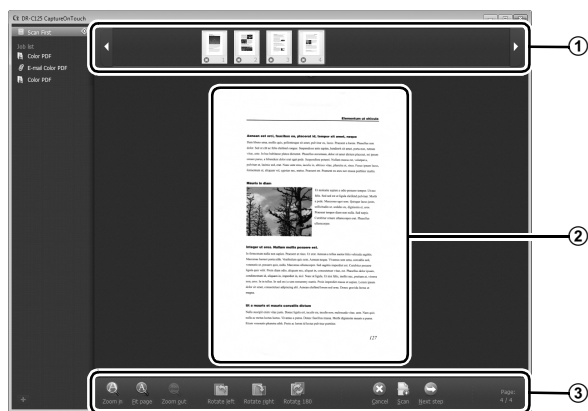
Hint

The driver settings dialog box includes setting items that are the same as the basic items in [Scanner setting], but the setting for each of them is stored separately. Which settings are used during scanning differs as follows depending on the setting of the [Use advanced settings dialog box] check box.

Setting of [Use advanced settings dialog box]	Basic items	Other than basic items
OFF	Settings of [Scanner setting]	Settings of the advanced settings dialog box of the scanner driver
ON	Settings of the advanced settings dialog box of the scanner driver	


Operation in Continuous Scanning Screen

If a document is scanned with either Scan First or Select Scan Job when [Enable continuous scanning] is set to [ON] in the Start screen, the continuous scanning screen appears when all of the pages of the placed document have been fed. You can confirm the scanned images and then continue scanning.



① Thumbnail Display Area

Displays the thumbnail images of the scanned document. The following operations are possible.










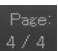
- Click a thumbnail image to display a preview of that scanned image in the preview area.
- Drag thumbnail images to change the positions of pages.
- Click  on a thumbnail image to delete the scanned image for that page (Scan First only).

② Preview Area

Displays the preview images of the scanned document.

③ Preview Controls

Control the preview images and cancel or continue scanning with the following buttons.

Tools (Name)	Description
 (Zoom in)	Enlarges the preview image.
 (Fit page)	Enlarges or reduces the preview image to fit the current window size.
 (Zoom out)	Reduces the preview image.
 (Rotate left)	Rotates the image 90 degrees counterclockwise. (Scan First only)
 (Rotate right)	Rotates the image 90 degrees clockwise. (Scan First only)
 (Rotate 180)	Rotates the image 180 degrees. (Scan First only)
 (Cancel)	Cancels the image scanning operation and returns to the top screen.
 (Scan)	Starts scanning of the next document.
 (Next step)	Proceeds to the next step in the scan process.
 (Page Number / Total Number of Pages)	Displays the current page and total number of pages.

Setting the Output Method

CaptureOnTouch is provided with various output methods for processing scanned images.

The output method specification is common to Scan First and Select Scan Job.

When Scan First:

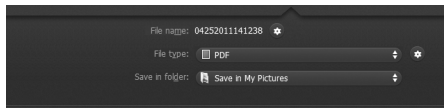
For Scan First, select an output method in the output method selection screen that appears after scanning, and then specify each of the output method items.

When Select Scan Job:

For Select Scan Job, specify the output method separately for each job.

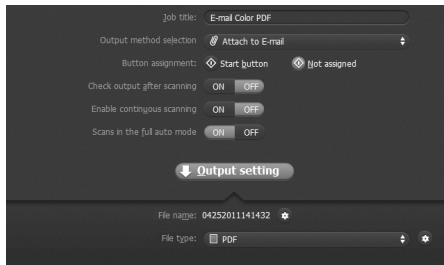
The setting items related to output differ depending on the output method.

Save to folder



Saves the scanned images to a specified folder. When you specify this output method, configure the settings for the image files to be saved.

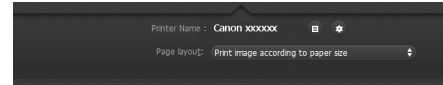
Attach to E-mail



Attaches the scanned images to new e-mail in the e-mail application. When you specify this output method, configure the settings for the image files to be attached to e-mail.

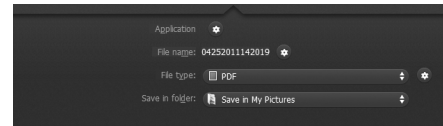
To use this feature, an e-mail application such as Windows Mail or Outlook Express (both of these applications come standard with the operating system) that supports MAPI (Microsoft Messaging Application Programming Interface) needs to be specified as the default program of the operating system.

Print



Prints the scanned images with a specified printer. When you specify this output method, specify the printer for printing.

Send to application



Saves the scanned image file in a specified folder and then opens it with a specified application. When you specify this output method, click the button next to [Application] and specify the executable file of an application that can open image files. In addition, configure the settings of the image file to be saved

Other Output Methods

You may also be able to select the following output methods depending on your computer environment.

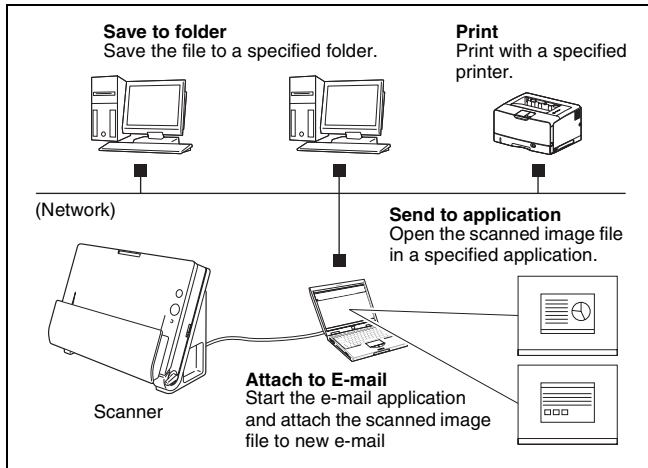
- If Evernote is installed on your computer, you can select [Save in Evernote]. When you specify this output method, configure the settings for the image files to be sent.
- In an environment in which SharePoint Server has been introduced, you can send scanned images to a SharePoint site. To do so, select [Save in SharePoint] as the output method, and configure the setting for the image files to be sent.

You must also open the advanced settings dialog box and configure settings such as the URL of the SharePoint site, account information, and the save destination folder. For details on settings, see the help (click the [Help] button in the settings screen).

Scanning with CaptureOnTouch (Mac OS X)

What is CaptureOnTouch?

CaptureOnTouch is a scanning application that allows you to scan a document with a simple operation by following the instructions on the screen.



CaptureOnTouch is provided with multiple scanning methods that can be selected according to the purpose and application.

Scan First

Scan a document and then select the output method. This method allows you to easily scan a document by just following the instructions on the screen.

Select Scan Job

Register scanning settings from the scanning conditions to the output method as jobs, and then scan a document by just selecting the job that suits your purpose. This method is convenient when you want to repeat scanning using a set procedure.

Scan with Start Button

Scan First is pre-assigned to the Start button of the scanner, so you can load a document and then start scanning by just pressing the Start button. You can also assign any job to the Start button.

File Formats of Saved Images


You can specify one of the following file formats for scanned images when using any output method other than [Print].

- PDF
- TIFF
- JPEG

Launching and Quitting CaptureOnTouch

By default, CaptureOnTouch becomes resident in the system when you start your computer.





Click  (CaptureOnTouch icon) in the menu bar and then click [Launch CaptureOnTouch] from the menu which appears to start CaptureOnTouch and display the main window.

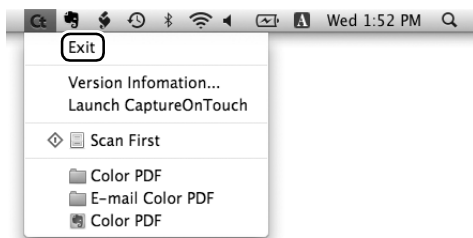
Hint

- The first time you launch CaptureOnTouch on a computer with Evernote installed, a message for confirming the registration of jobs for sending scanned images to Evernote appears. If you click the [OK] button, two jobs for Evernote are registered to CaptureOnTouch.
- The interval between the time you press the Start button on the scanner and the time scanning begins is shortened when the [Make CaptureOnTouch resident] check box is selected in the [Basic settings] tab of the [Environmental settings] dialog box. Refer to the *User Manual* for detailed information.

Quitting CaptureOnTouch

To close the CaptureOnTouch window, click  at the top of the window. This closes the window, but CaptureOnTouch will continue to reside in the system.

To quit the CaptureOnTouch application, click  (CaptureOnTouch icon) in the taskbar, and select [Exit] from the menu.



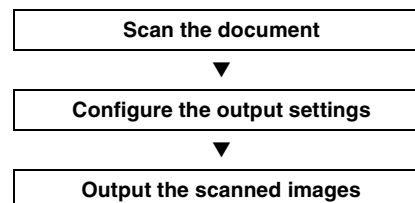
Restarting CaptureOnTouch

To use CaptureOnTouch after it has been made not resident in the system, use one of the following procedures to restart it. CaptureOnTouch will launch and become resident in the system again.

- Open [Applications] - [Canon DR-C125] folder from the Finder, and double-click [CaptureOnTouch DR-C125].
- Press the Start button on the scanner (in this case, the main screen of CaptureOnTouch will open and scanning will start using the scan method assigned to the Start button).

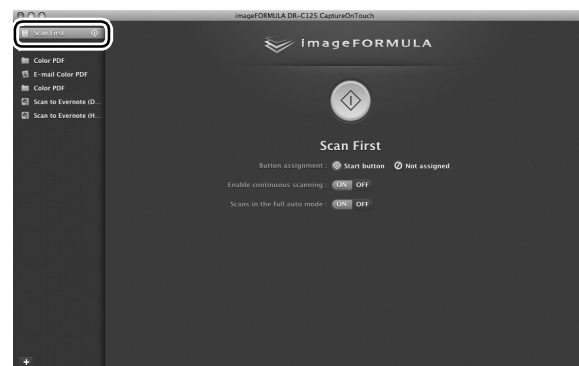
Scan First

Operation Flow



1 Place the document in the scanner.

2 Click [Scan First].



The top screen of Scan First appears.

3 Set the scan method in the top screen.



- ① Specify whether to enable continuous scanning. When scanning multiple documents as one scanned image or splitting up a large document to scan in parts, select [ON] to enable continuous scanning.
- ② Specify whether to scan the document in full auto mode. When you want to specify arbitrary scanning conditions, select [OFF] and configure the scanner settings. (See p. 40)

4 Click the Start button.



The document is scanned. While scanning is in progress, the number of pages scanned is displayed in addition to the scanner settings.

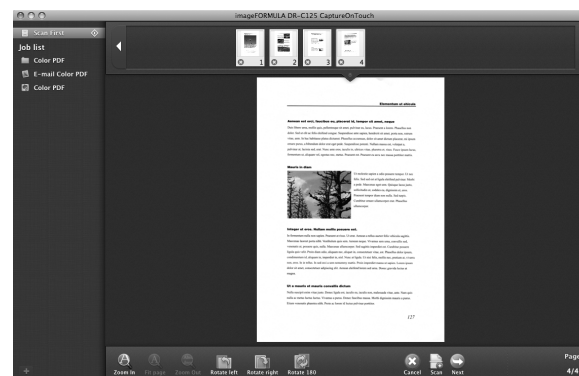
When scanning is finished, the Output settings screen appears.

! IMPORTANT

If you configure scanning conditions that consume a large amount of the computer's memory, scanning may stop because of insufficient memory. If an error message appears due to insufficient memory while scanning is in progress, exit the application, change the scanning conditions, and then try scanning again.

💡 Hint

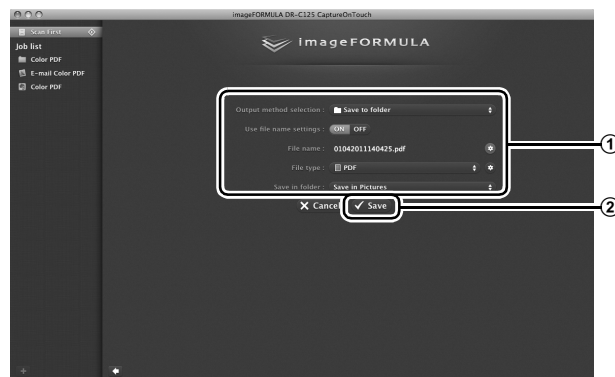
If a document is scanned when [Enable continuous scanning] is set to [ON], the continuous scanning screen (see p. 52) appears when scanning of the document is finished.



If you place the next document and click [Scan], scanning of the document starts.

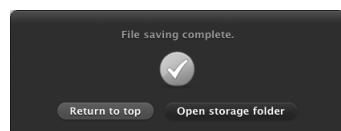
When scanning of all the documents is finished, click [Next step].

5 Configure the settings related to output and then output the scanned images.



- ① Configure the settings related to output. (See p. 43)
- ② Click this button to output the scanned images. The button name differs for each output method. For example, it is [Save] when the output method is set to [Save to folder].

When output is finished, the complete screen appears. Scan First is now finished.

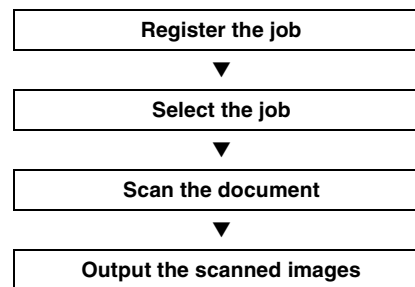


Hint

- Clicking [Return to top] returns to the main screen of Scan First.
- When [Attach to E-mail] or [Print] is specified as the output method, you can click [Open storage folder] to open the folder in which the scanned images were saved.

Select Scan Job

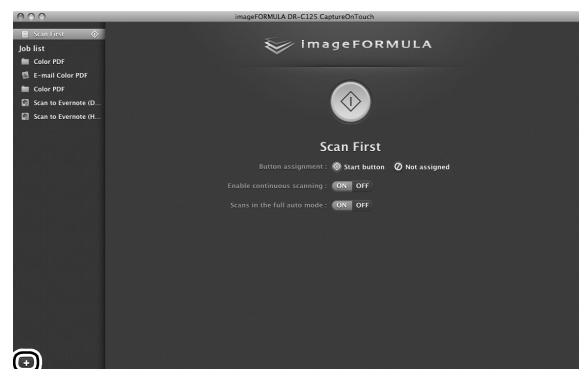
Operation Flow



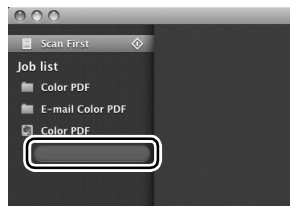
Registering and Editing Jobs

In CaptureOnTouch, up to 10 jobs can be registered for use with Select Scan Job.

1 Click the button.



2 Enter the job name, and press the Enter key.



3 Specify the output method of the job. (See p. 43)



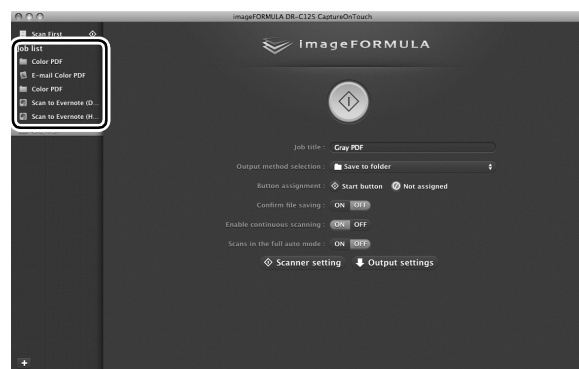
4 Click [Output settings], and configure the output settings. The output setting items differ depending on the specified output method. For details on the setting items, see the Help of CaptureOnTouch.



Selecting a Job and Scanning

1 Place the document in the scanner. (See p. 28)
The top screen of Select Scan Job appears.

2 Click a job.



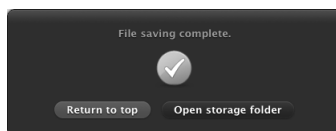
Hint

- If you set [Confirm file saving] to [ON], you can check the output settings after scanning.
- If you set [Enable continuous scanning] to [ON], you can continue scanning after all the pages of the document are scanned.

3 Click the Start button.

The document is scanned. While scanning is in progress, the number of pages scanned is displayed in addition to the scanner settings.

When all the pages of the document are scanned, the scanned images are output according to the registered job settings and the complete screen appears.

**! IMPORTANT**

If you configure scanning conditions that consume a large amount of the computer's memory, scanning may stop because of insufficient memory. If an error message appears due to insufficient memory while scanning is in progress, exit the application, change the scanning conditions, and then try scanning again.

Hint

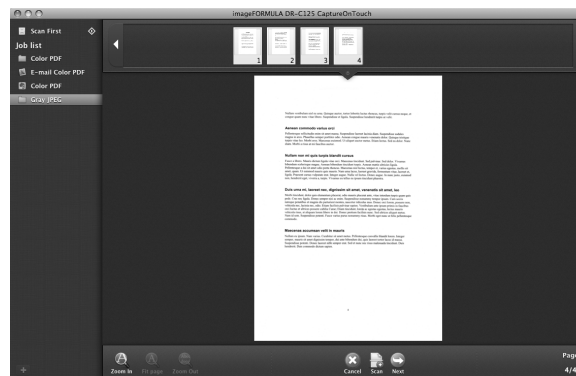
- Clicking [Return to top] returns to the top screen of Select Scan Job.
- When [Attach to E-mail] or [Print] is specified as the output method, you can click [Open storage folder] to open the folder in which the scanned images were saved.

When [Enable continuous scanning] is set to [ON]

The continuous scanning screen (see p. 52) appears when all the pages of the document are scanned.

If you want to scan another document, place the document in the scanner and then click [Scan].

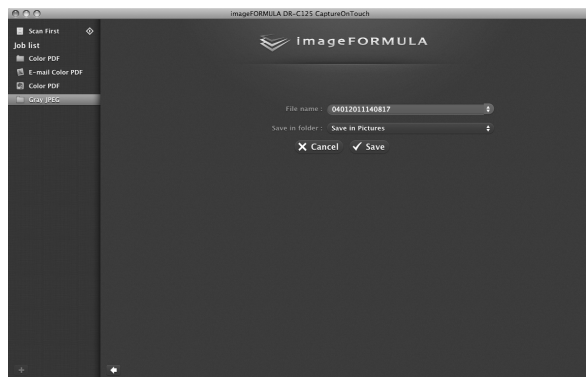
When scanning of all the documents is finished, click [Next step].



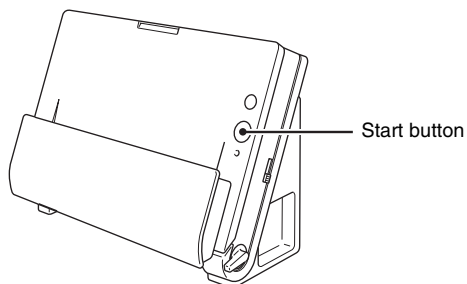
When [Check output after scanning] is set to [ON]

The Output Confirmation screen appears before the scanned images are output.

Change the settings for the output method if necessary and then click the output button. The name of the output button differs for each selected output method.

**Scanning with Start Button**

By default, Scan First is pre-assigned to the Start button.



If you place the document and press the Start button, CaptureOnTouch launches and scanning starts.

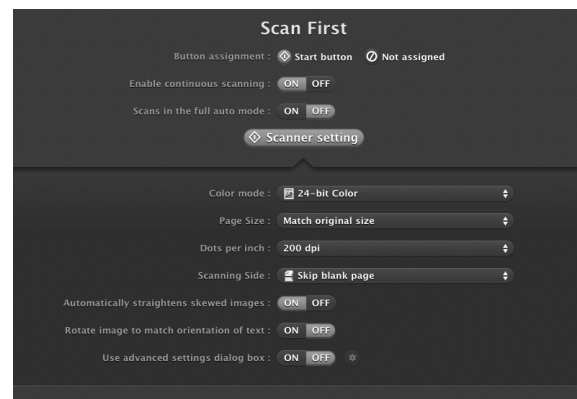
Hint

You can also assign any job to the Start button. If a job is assigned, the document is scanned and the scanned images are output according to the settings of the job. CaptureOnTouch ends automatically 5 seconds after the output process finishes.

Scanner Settings

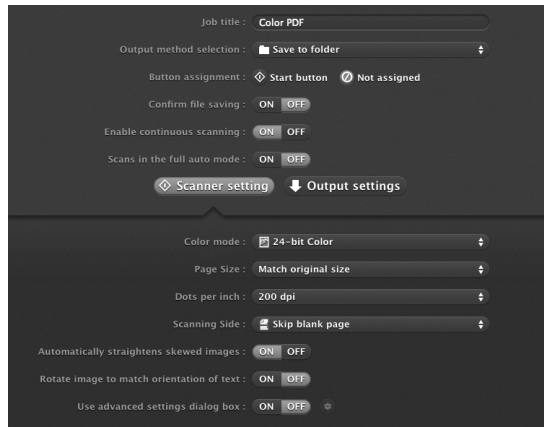
By default, CaptureOnTouch scans with scanning conditions that match the document because scanning in full auto mode is enabled. If you want to specify, for example, the scanning mode and document size, you can configure the desired scanning conditions in the scanner settings.

The scanner setting items are common to Scan First and Select Scan Job.

When Scan First:

For Scan First, configure the scanner settings before you start scanning.

When Select Scan Job:



For Select Scan Job, configure the scanner settings for each job.

Setting Basic Items

Scanner settings include the basic items that are configured in [Scanner setting], and the setting items that are configured in the advanced settings dialog box. The settings in the advanced settings dialog box are applied for settings other than the basic items. The settings in the driver settings dialog box are applied for any other settings.

Color mode

Select from the following modes for scanning documents.

Detect automatically	Detects whether the document is color or gray and then scans.
24-bit Color	Scans the document in color.
Grayscale	Scans the document in Grayscale.
Black and White	Scans the document in black and white (binary).

Page Size

Specify the page size of the document.
If you specify [Match original size], the page size of the scanned document is detected and the images are saved at the detected size.

Dots per inch

Specify the scanning resolution.
When [Detect automatically] is specified, the resolution is detected automatically from the content of the scanned document.

Scanning Side

Specify whether to scan only one side or both sides of a document.
When [Skip blank page] is specified, any blank page detected within the document is skipped during scanning.
When scanning a folded document, select [Folio].

Automatically straightens skewed images

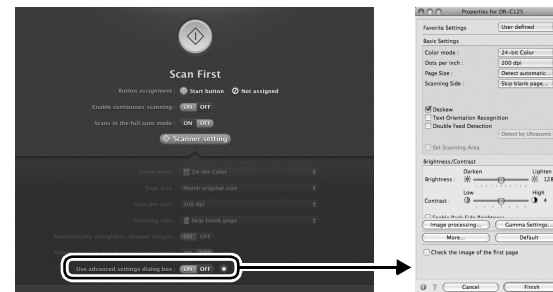
When a document is scanned skewed, the skewed scanned images are detected and then straightened.

Rotate image to match orientation of text

The orientation of text in scanned images is detected, and the images are rotated so that the text is correctly oriented.

Use advanced settings dialog box

Configure scanner settings other than the basic items in the advanced settings dialog box. To open the advanced settings dialog box, select [ON] and then click the button.



For details on the setting items, see the Help of the driver settings dialog box.

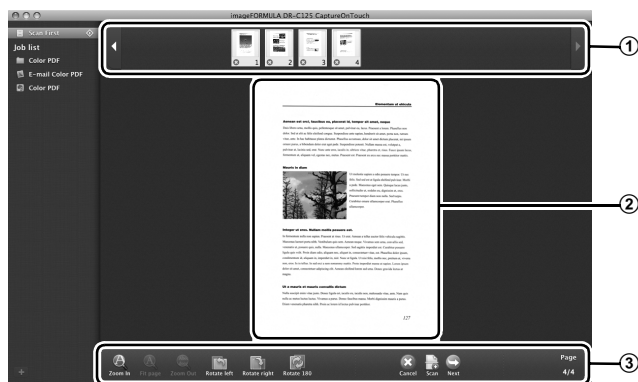
Hint

The driver settings dialog box includes setting items that are the same as the basic items in [Scanner setting], but the setting for each of them is stored separately. Which settings are used during scanning differs as follows depending on the setting of the [Use advanced settings dialog box] check box.

Setting of [Use advanced settings dialog box]	Basic items	Other than basic items
OFF	Settings of [Scanner setting]	Settings of the advanced settings dialog box of the scanner driver
ON	Settings of the advanced settings dialog box of the scanner driver	


Operation in Continuous Scanning Screen

If a document is scanned with either Scan First or Select Scan Job when [Enable continuous scanning] is set to [ON] in the Start screen, the continuous scanning screen appears when all of the pages of the placed document have been fed. You can confirm the scanned images and then continue scanning.



① Thumbnail Display Area

Displays the thumbnail images of the scanned document. The following operations are possible.










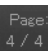
- Click a thumbnail image to display a preview of that scanned image in the preview area.
- Drag thumbnail images to change the positions of pages.
- Click  on a thumbnail image to delete the scanned image for that page (Scan First only).

② Preview Area

Displays the preview images of the scanned document.

③ Preview Controls

Control the preview images and cancel or continue scanning with the following buttons.

Tools (Name)	Description
 (Zoom in)	Enlarges the preview image.
 (Fit page)	Enlarges or reduces the preview image to fit the current window size.
 (Zoom out)	Reduces the preview image.
 (Rotate left)	Rotates the image 90 degrees counterclockwise. (Scan First only)
 (Rotate right)	Rotates the image 90 degrees clockwise. (Scan First only)
 (Rotate 180)	Rotates the image 180 degrees. (Scan First only)
 (Cancel)	Cancels the image scanning operation and returns to the top screen.
 (Scan)	Starts scanning of the next document.
 (Next step)	Proceeds to the next step in the scan process.
 (Page Number / Total Number of Pages)	Displays the current page and total number of pages.

Setting the Output Method

CaptureOnTouch is provided with various output methods for processing scanned images.

The output method specification is common to Scan First and Select Scan Job.

When Scan First:

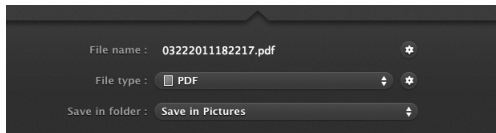
For Scan First, select an output method in the output method selection screen that appears after scanning, and then specify each of the output method items.

When Select Scan Job:

For Select Scan Job, specify the output method separately for each job.

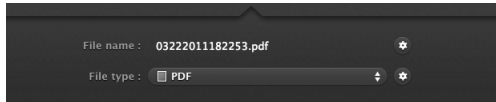
The setting items related to output differ depending on the output method.

Save to folder



Saves the scanned images to a specified folder. When you specify this output method, configure the settings for the image files to be saved.

Attach to E-mail

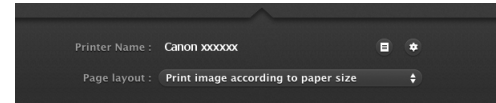


Attaches the scanned images to new e-mail in the e-mail application. When you specify this output method, configure the settings for the image files to be attached to e-mail.

To use this feature, your e-mail application needs to be specified as the default program of the operating system. The following shows examples of typical software that is supported.

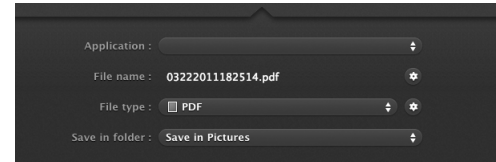
- Mail (application that comes standard with the operating system)
- Microsoft Entourage 2004 for Mac

Print



Prints the scanned images with a specified printer. When you specify this output method, specify the printer for printing.

Send to application



Saves the scanned image file in a specified folder and then opens it with a specified application. When you specify this output method, specify the executable file of an application that can open image files. In addition, configure the settings of the image file to be saved

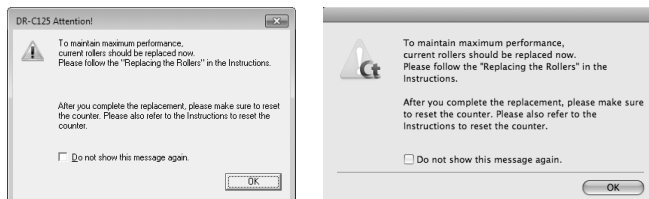
Other Output Methods

If Evernote is installed on your computer, you can select [Scan to Evernote]. When you specify this output method, configure the settings for the image files to be sent.

Daily Maintenance

Replacing Consumable Parts

The two rollers (feed roller and retard roller) installed in the scanner are consumable parts. The feed roller and retard roller wear with scanning. If the feed roller and retard roller are worn, documents may not feed correctly and paper jams or double-feed errors may occur. When more than 100,000 pages have been fed (total number of pages fed by the scanner), a message prompting you to replace the rollers is displayed when the computer is started.



If this message begins to be displayed at startup, purchase an exchange roller kit and replace the worn parts with the consumable parts included in the kit (feed roller and retard roller). For details on the exchange roller kit, see p. 66.

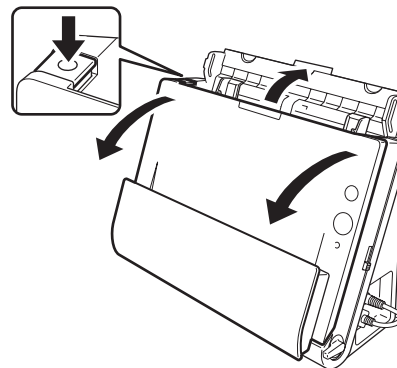
Furthermore, the counter in the scanner that records the number of pages fed also needs to be reset when you replace the rollers. (See p. 57)

Hint

Even before it becomes time to replace the rollers, scanned images may become stretched in the vertical direction due to wear of the rollers. If this happens, adjust the reduction ratio. Refer to the *User Manual* for detailed information.

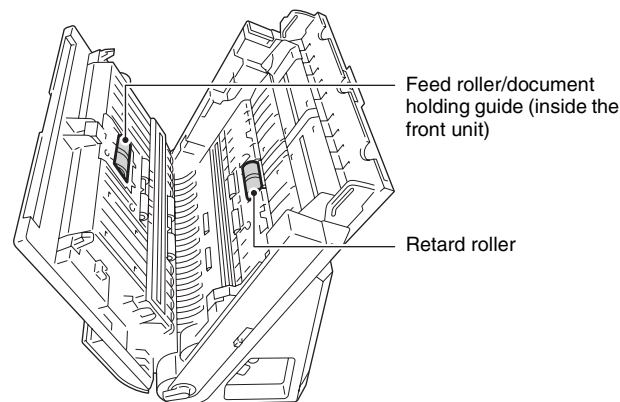
Opening and Closing the Front Unit

- 1 **Open the document feed tray. Press the OPEN button and pull open the front unit toward you.**

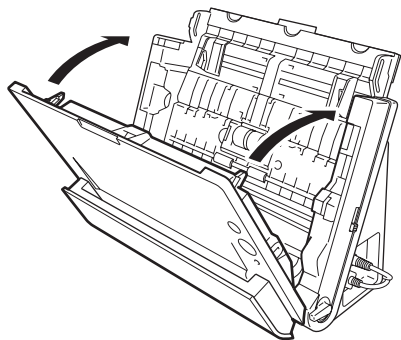


Hint

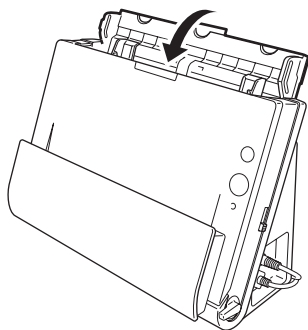
The location of each of the consumable parts is shown below.



- 2** When closing the front unit, make sure that it is completely closed by gently pressing the left and right until you hear a click.

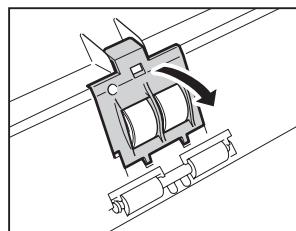


- 3** Close the document feed tray.

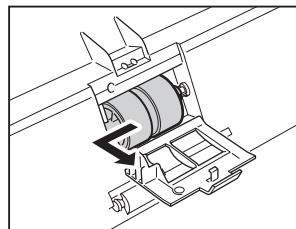


Replacing the Feed Roller

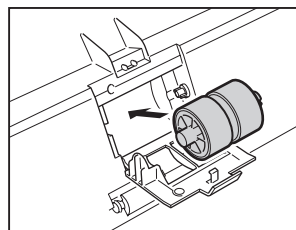
- 1** Open the roller cover.



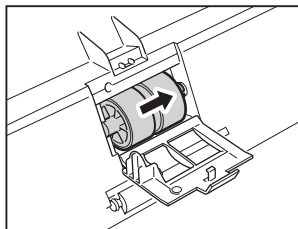
- 2** Slide the feed roller to the left, and then remove it.



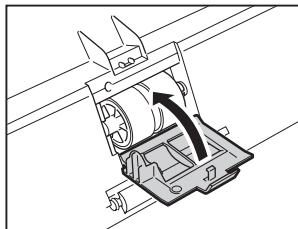
- 3** Install the new feed roller. When installing the feed roller, align the notch on the roller with the shaft of the front unit.



- 4** Slide the roller to the light to secure it.

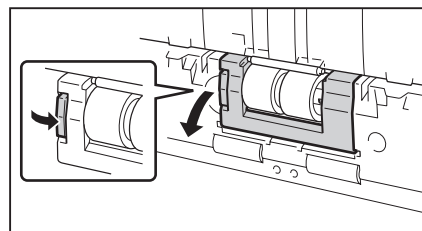


- 5** Close the roller cover. Make sure that it is completely closed by pressing until you hear a click.

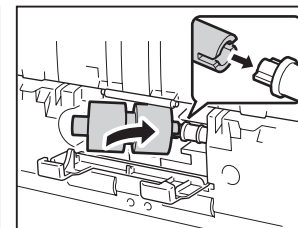
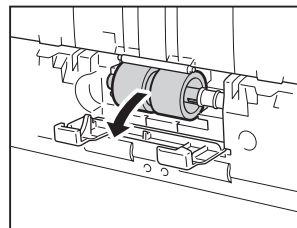


Replacing the Retard Roller

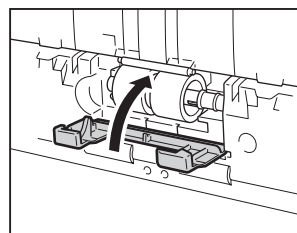
- 1** Open the roller cover.



- 2** Remove the retard roller and then install the new retard roller. When installing the feed roller, align the notch on the roller with the shaft of the main unit.



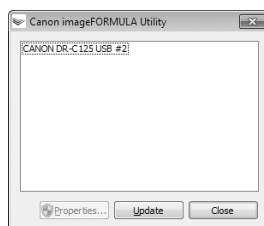
- 3** Close the roller cover. Make sure that it is completely closed by pressing until you hear a click.



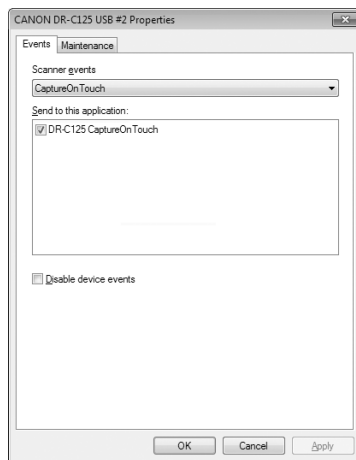
Resetting the Counters

Under Windows

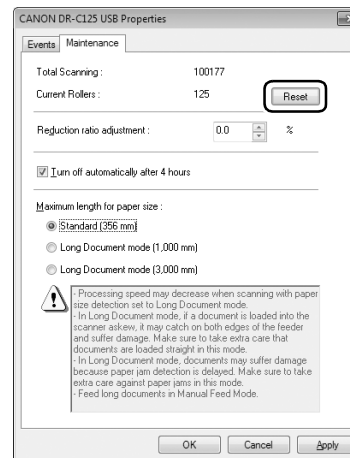
- 1 Start Windows and log in as a user with administrator privileges.
- 2 Click the Start button, and then click [All Programs], [Canon DR-C125], and [Canon imageFORMULA Utility]. imageFORMULA Utility starts.



- 3 Click [CANON DR-C125 USB] and click [Properties]. The scanner's properties appear.




- 4 Click the [Maintenance] tab, and click [Reset].



The counter for [Current Rollers] resets.

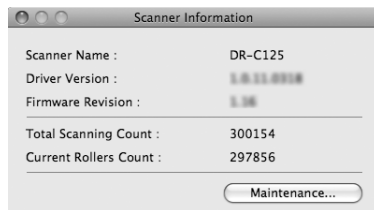
- 5 Click [OK] to close the scanner properties.

Under Mac OS X

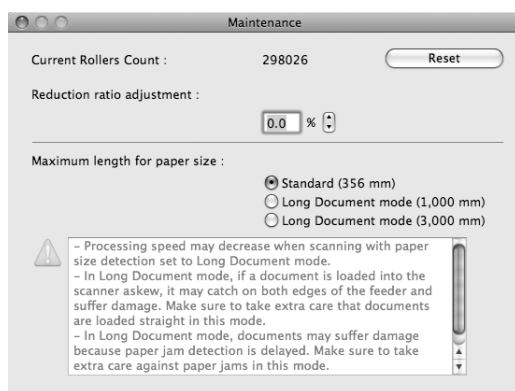
- 1 Start CaptureOnTouch.
- 2 Click [Scan First].
- 3 Click [OFF] next to [Scans in the full auto mode].
- 4 Click the [Scanner setting] button.
- 5 Click [ON] next to [Use advanced settings dialog box].
- 6 Click .

This will open the advanced settings dialog box for the scanner.

7 Click to display the [Scanner Information] dialog box.



8 Click [Maintenance] to display the [Maintenance] dialog box.



9 Click [Reset].

10 Click to close the [Maintenance] dialog box.

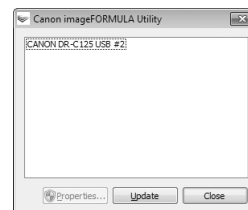
Auto Power Off Setting

The scanner automatically turns off if 4 hours elapse without scanning or another operation being performed.

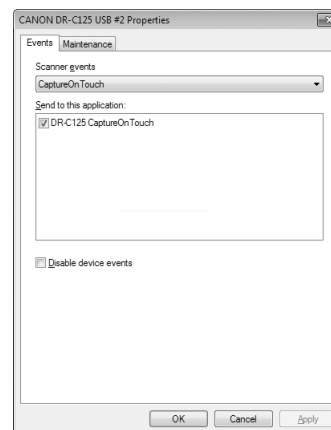
To disable this setting, follow the procedure below.

1 Start Windows and log in as a user with administrator privileges.

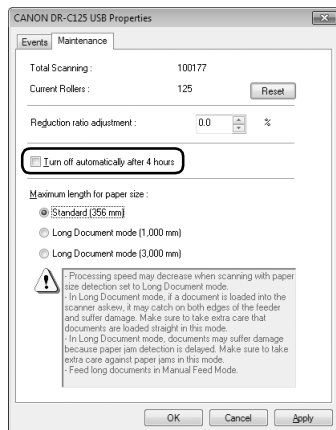
2 Click the Start button, and then click [All Programs], [Canon DR-C125], and [Canon imageFORMULA Utility]. imageFORMULA Utility starts.



3 Click [CANON DR-C125 USB] and click [Properties]. Scanner properties are displayed.



- 4 Click the [Maintenance] tab and then clear the [Turn off automatically after 4 hours] check box.



- 5 Click [OK] to close the scanner properties.

Common Problems and Solutions

This section provides recommended solutions to common problems. If you have a problem that is not solved by the following, contact your local authorized Canon dealer.

Problem 1 The scanner will not turn on.

Solutions Confirm that the AC adapter is plugged firmly into a power outlet.

Problem 2 The scanner is not recognized.

Solutions

- (1) Confirm that the scanner is properly connected to the computer with a USB cable.
- (2) Confirm that the scanner is turned on. See the previous "Problem 1" if the scanner does not turn on.
- (3) The computer's USB interface may not support the scanner. The scanner cannot be guaranteed to work with all USB interfaces.
- (4) Confirm that the supplied USB cable is used to connect the scanner to the computer. The scanner cannot be guaranteed to work with all available USB cables.
- (5) If the scanner is connected to the computer via a USB hub, try removing the hub and connecting directly to the computer.

Problem 3 Documents feed askew (scanned images are slanted).

Solutions

- (1) Align the document guides to fit the documents as closely as possible, and load the documents so that they feed straightly.
- (2) Enable [Automatically straightens skewed images] (or [Deskew]) in the scanner driver settings.
- (3) If many pages have been scanned since roller cleaning, clean the rollers. If documents still feed askew, roller replacement or other maintenance may be needed. See Chapter 7 Maintenance for roller replacement procedures.

Problem 4 Both sides are not scanned even when the Duplex scanner driver setting is enabled.

Solutions In CaptureOnTouch, executing a job for which single-sided (simplex) scanning is registered will always result in simplex scanning, regardless of scanner driver settings.
To perform duplex scanning, either change the job setting or create another job for duplex scanning.

Problem 5 If white lines or streaks appear in scanned images.

Solutions Clean both sides of the scanner glass, and the rollers. If a sticky substance such as glue or correction fluid is found, carefully wipe with just enough pressure to clean the area where the lines appear. If the problem cannot be solved by cleaning, the internal glass may be scratched. Contact your local authorized Canon dealer.

Problem 6 Pages are missing.


Solutions Then the scanner driver's [Scanning Side] setting is [Skip Blank Page], documents with very little black may be unintentionally skipped. Click the [Setting] button and decrease the [Set the likelihood of skipping blank page] value, or select another scan mode setting such as [Simplex] or [Duplex]. If pages are skipped due to the document double feeding, see "Problem 7 Documents jam (or double-feed)".

Problem 7 Documents jam (or double-feed).

Solutions

- (1) If the roller has been installed correctly, clean it if necessary.
- (2) Proper scanning may not be possible when document pages stick together due to static electricity. Fan the documents before you load them.
- (3) Set the feed selection lever to the bypass position, and manually feed the scanner one page at a time.

Problem 8 Each scanned image of a multi-page document is saved as a separate document.

Solutions With CaptureOnTouch, you can scan multiple pages into one image file when TIFF or PDF file format is selected. To do this, select [File type], click the  button, and select [Save all pages as one file] in the displayed dialog box.

Problem 9 Documents feed, but the scanning procedure does not complete.

Solutions When Panel-Feeding or Auto-Feeding is selected as the feeding method on the scanner driver's setting screen, after a document is fed, scanning does not occur until the scan button is clicked on the scan panel.

Problem 10 Scanned images of multiple pages cannot be saved in a single JPEG or BMP (PICT) file.

Solutions Multiple scanned images cannot be saved in a single JPEG or BMP (PICT) file. Save the images in either multi-page TIFF or PDF format.

Problem 11 Memory becomes insufficient and scanning stops.

Solutions If you configure scanning conditions that use a large amount of the computer's memory, scanning may stop because of insufficient memory. Although this depends on the computer's memory size, the possibility of insufficient memory increases if any of the following scanning conditions overlap.

- [Color Mode] is set to [24-bit Color]
- A large page size (e.g. Legal) is specified as the [Page Size]. Alternatively, the page size is set to [Scanner's Maximum].
- A high resolution (600dpi etc.) is specified for [Dots per inch].

If an error message appears due to insufficient memory while scanning is in progress, exit the application, change the scanning conditions (e.g. reduce the resolution or page size) and then try scanning again. In addition, the amount of memory used can be contained by turning off [Moire Reduction] and [Please change prevent bleed through and remove] if they are set to on.

Problem 12 Scanned images are upside down.

Solutions Confirm the scanner driver settings.
In Windows, confirm that the [Upside-down feeding] check box in the [Feeding] tab is cleared.
In Mac OS X, confirm that the [Upside-down feeding] check box in the [More] dialog box is cleared.

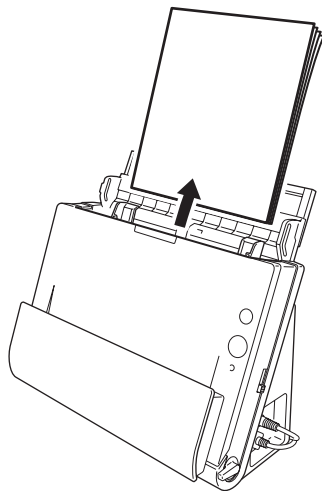
Clearing a Paper Jam

When paper jams occur during scanning, use the following procedure to clear them.

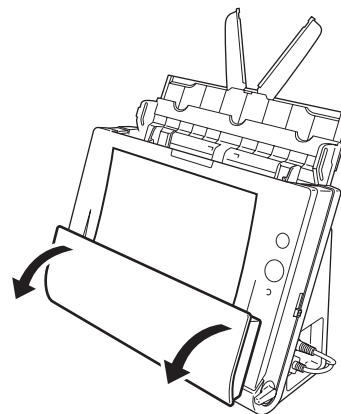
⚠ WARNING

Be careful when removing jammed paper. It is possible to cut your hand on the edge of a sheet of paper.

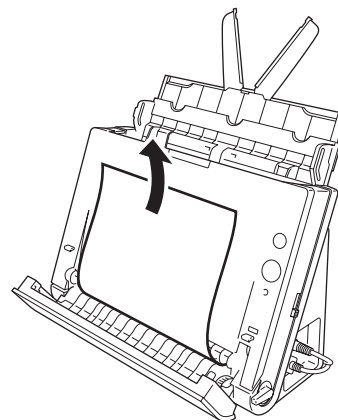
- 1 Remove any documents that have been left in the eject tray.**



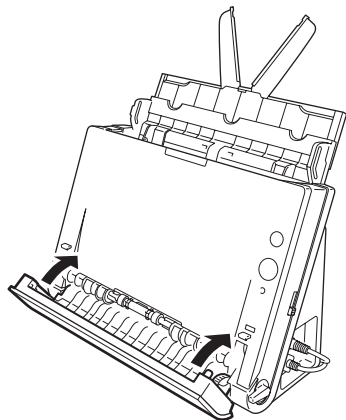
- 2 When the jammed document is on the document ejecting side, open the document eject tray.**



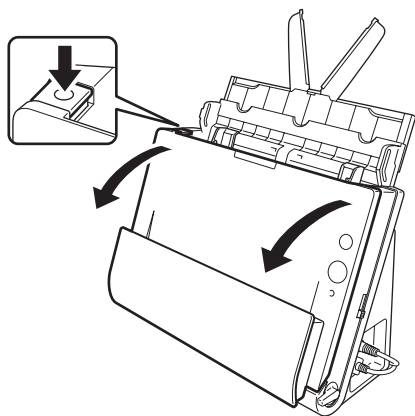
- 3 Remove the jammed document.**



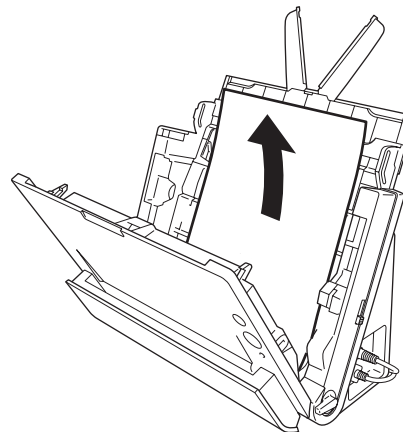
- 4** Return the document eject tray to its original position. Make sure that it is completely closed by pushing until you hear a click.



- 5** Press the OPEN button and pull open the front unit toward you.



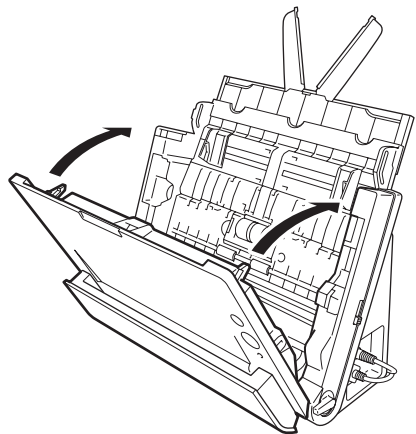
- 6** Remove the jammed document.



! IMPORTANT

Make sure to pull the document out carefully, without applying too much force. If the jammed paper tears while you are pulling it out, make sure to remove any remaining pieces from inside the scanner.

- 7 Close the front unit by gently pushing it up on both sides until it clicks into place. Make sure that the front unit is completely closed by pushing until you hear a click.**



After removing the jammed paper, check to see if the last page was scanned correctly, and then continue scanning.

 **Hint**

If a paper jam occurs when [Rapid recovery system] check box is ON in the scanner driver setting screen, the image data of the document is not saved and operation is interrupted. This allows you to continue scanning from the document that caused the paper jam after the paper jam is fixed. This function is only enabled in applications that support rapid recovery system.

Specifications

Main Unit

Type	Desktop sheetfed scanner
Scanning Document Size	
Plain Paper	
Size	Width: 50.8 mm to 216 mm (2" to 8.5") Length: 53.9 mm to 356 mm (2.12" to 14") (You can scan documents up to 3,000 mm (118.1") long by setting the scanner to the Long Document mode.)
Thickness (page separation mode)	When U-turn path: 52 to 128 g/m ² (14 to 34 lb bond) 0.06 to 0.15 mm (0.0024" to 0.0059") When straight path: 40 to 209 g/m ² (11 to 58 lb bond) 0.05 to 0.25 mm (0.002" to 0.0098")
Business Card	
Size:	50 mm x 53.9 mm (1.97" x 2.12") or larger
Paper weight:	300 g/m ² (80 lb bond) 0.35 mm (0.0138") or less
Orientation:	Vertical feeding only
Card	
Size:	53.9 mm x 85.5 mm (2.12" x 3.37") (ISO standard)
Card thickness:	0.76 mm (0.03") or less
Orientation:	Horizontal feeding only
Feed path:	Straight path only
Embossed cards can be scanned.	
Document Feeding Method	Automatic
Scanning Sensor	Contact image sensor
Light source	LED
Scanning Side	Simplex/duplex
Scanning modes	Black and White, Error Diffusion, 256-level Grayscale, Advanced Text Enhancement, Advanced Text Enhancement II, 24-bit Color
Scanning resolution	150 x 150dpi/200 x 200dpi/300 x 300dpi/ 400 x 400dpi/600 x 600dpi

Scanning Speed (Conditions: Core 2 Duo 3.0GHz CPU, 2 GB memory, A4 document size)

Black and white	Simplex	200dpi	25 pages/min.
		300dpi	25 pages/min.
	Duplex	200dpi	50 images/min.
		300dpi	50 pages/min.
Grayscale	Simplex	200dpi	25 pages/min.
		300dpi	25 pages/min.
	Duplex	200dpi	50 images/min.
		300dpi	50 pages/min.
24-bit Color	Simplex	200dpi	25 pages/min.
		300dpi	15 pages/min.
	Duplex	200dpi	50 images/min.
		300dpi	30 pages/min.
Interface	Hi-Speed USB 2.0		
Other functions	Auto document thickness adjustment, folio scanning		
External Dimensions	300 mm (11.81")(W) x 217 mm (8.54")(H) x 156 mm (6.14")(D) (with the feed tray close).		
	300 mm (11.81")(W) x 336 mm (13.2")(H) x 235 mm (9.25")(D) (with the feed tray open).		
Weight (without AC adapter)	Approximately 2.6 kg (5.73 lb)		
Power Supply (using AC adapter)	DC16V 1.0A		
Power Consumption			
100V	Scanning: maximum 12.7 W; in the sleep mode: maximum 1.8 W; with power switch OFF: maximum 0.5 W		
120V	Scanning: maximum 12.7 W; in the sleep mode: maximum 1.8 W; with power switch OFF: maximum 0.5 W		
200 - 240V	Scanning: maximum 12.8 W; in the sleep mode: maximum 1.9 W; with power switch OFF: maximum 0.5 W		
Noise	Not more than 40 dB		

Operating Environment

Temperature: 10°C to 32.5°C (50°F to 90.5°F)

Humidity: 20% to 80% RH

AC Adapter (100 to 240 V type)

Model Number MG1-4578

Input AC 100 to 240 V, 50/60 Hz, 0.3 to 0.53 A

Output DC 16 V, 1.8 A

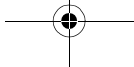
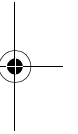
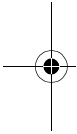
Weight Approximately 0.2 kg (0.44 lb) (excluding power cord)

Replacement parts

Exchange roller kit (product code: 5484B001)

Kit to replace the rollers (feed roller, retard roller) and document holding guide.

- For the replacement procedure, see “Replacing Consumable Parts” on p. 54.
- Contact your local authorized Canon dealer or service representative for detailed information about the replacement parts.





Canon

CANON ELECTRONICS INC.

1248, SHIMOKAGEMORI, CHICHIBU-SHI, SAITAMA 369-1892, JAPAN

CANON U.S.A. INC.

ONE CANON PLAZA, LAKE SUCCESS, N.Y. 11042, U.S.A.

CANON CANADA INC.

6390 DIXIE ROAD, MISSISSAUGA, ONTARIO L5T 1P7, CANADA

CANON EUROPA N.V.

BOVENKERKERWEG 59-61, P.O.BOX 2262, 1180 EG AMSTELVEEN, THE NETHERLANDS

CANON LATIN AMERICA, INC.

703 WATERFORD WAY, SUITE 400 MIAMI, FLORIDA 33126, U.S.A.

CANON AUSTRALIA PTY. LTD.

1 THOMAS HOLT DRIVE, NORTH RYDE, SYDNEY. N.S.W. 2113. AUSTRALIA

CANON SINGAPORE PTE. LTD.

1 HARBOUR FRONT AVENUE #04-01, KEPPEL BAY TOWER, SINGAPORE 098632

CANON HONGKONG COMPANY LTD.

19TH FLOOR, THE METROPOLIS TOWER, 10 METROPOLIS DRIVE, HUNGHOM, KOWLOON, HONG KONG.

CANON KOREA BUSINESS SOLUTIONS INC.

168-12 SAMSEONG-DONG, GANGNAM-GU, SEOUL, KOREA



CE-IE-840



PUB. CE-IE-840

xxxxxxx

© CANON ELECTRONICS INC. 2011

PRINTED IN JAPAN

